



**LORD'S HOMOEOPATHIC LAB. PVT. LTD.**

**HOMOEOPATHY AT ITS BEST**

# LORD'S HOMOEOPATHY AT ITS BEST.

## OVER THREE DECADES OF TRUST AND QUALITY

Since our inception in the year 1986 LORD'S has been at the forefront of bringing the benefits of high quality Homoeopathic remedies to the common man. Focus on quality and customer satisfaction by ameliorating the ailing masses is our continuous endeavor. The eminent quality of our products has earned us the respect and trust of Homoeopathic physicians and users across the globe.

## OUR QUALITY STANDARDS



LORD'S fully operational units in Delhi & Haryana are compliant with Indian & International GMP guidelines & adhere to the highest International Quality Standard parameters that distinguishes us from other manufacturers which ensures in providing impeccable quality at the most affordable prices

## OUR PRODUCTS

LORD'S manufactures and markets the largest range of homoeopathic products in India, comprising a portfolio that includes over 300 formulations and a vast number of Generics including Mother Tinctures, Dilutions, Tissue salt remedies, Low Attenuation Tablets, Syrups, Ointments, Cosmetics, Drops & Ophthalmic preparations.



## OUR ENDEAVOUR

LORD'S emphasizes on impeccable quality, product consistency, therapeutic concentration through easy to consume dosages. It is our endeavour to strengthen the hands of Homoeopathic Physician and the ultimate consumer by making available to them the best of Homoeopathic medicines at the most affordable prices.





# Regain Your Energy with **LORD'S ALFALFA MALT**

Rich source of protein, vitamins & minerals

## INDICATIONS

- Physical Weakness
- Nervous Exhaustion
- Anaemia
- Convalescence



**Composition:** Alfalfa 2x, Avena Sativa 2x, Hydrastis Canadensis 2x, Withania Somnifera 2x, Acidum Phosphoricum 2x, Calcarea Phosphorica 1x, Kali Phosphoricum 1x, Ferrum Phosphoricum 1x, Natrum Phosphoricum 1x, China Off 2x, Magnesium Phosphoricum 1x, Malt Extract I.P. q.s., Alcohol Content 1.6% v/v, Colour Caramel.

## DOSAGE:

**Adults:** 1-2 Tablespoonful, 2-3 times a day

**Children :** 1 Teaspoonful, 2-3 times a day or as prescribed by the physician

**PRESENTATION:** 250g. & 450g. (50 G EXTRA)

**LORD'S**

**HOMOEOPATHY AT ITS BEST**

lordshomeopathic.com

Information for the use only of a registered medical practitioner or a hospital or laboratory



*Supercharge Yourself with*

**LORD'S ALFATONE**

**WITH GINSENG SYRUP**

ALG

**INDICATIONS:**

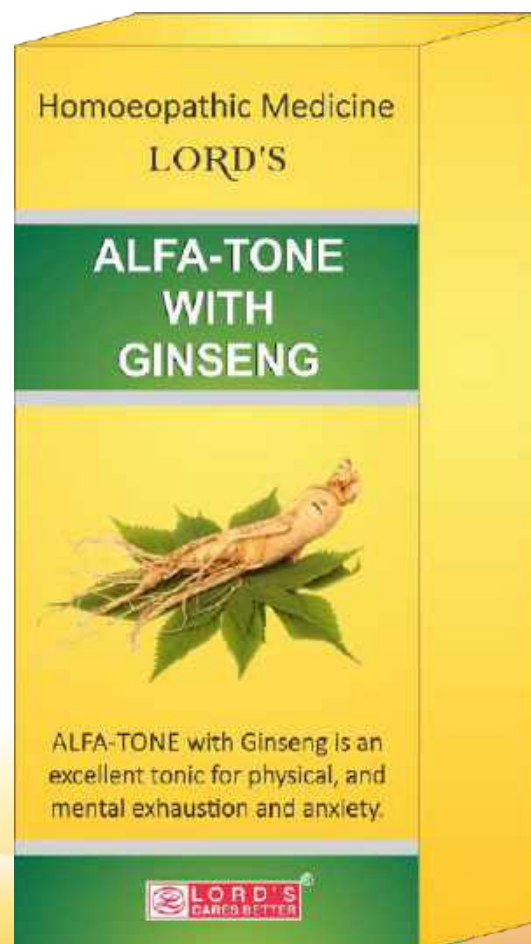
- Anxiety
- Loss of appetite
- Loss of weight
- Convalescence
- Nerve weakness
- Physical Exhaustion

**COMPOSITION:**

Alfalfa ø, Avena Sativa ø, China Officinalis ø, Ginseng ø, Hydrastis Can ø, Calcarea Phosphorica 6x, Ferrum Aceticum 6x, Kalium Arsenicosum 4x, Kalium Phosphoricum 3x, Syrup base q.s., Alcohol content 10% v/v.

**DOSAGE:** One tablespoonful three times a day or as directed by the physician.

**PRESENTATION:** 180ml. & 450ml.



**LORD'S**

**HOMOEOPATHY AT ITS BEST**

[lordshomoeopathic.com](http://lordshomoeopathic.com)

Information for the use only of a registered medical practitioner or a hospital or laboratory



# Refill your Energy with **LORD'S ALFALFA TONIC**

ALT

A COMPLETE FAMILY HEALTH TONIC

## INDICATIONS

- Anxiety
- Loss of appetite
- Fatigue
- Anaemia
- Nervous Exhaustion



**COMPOSITION:** Alfalfa ø, Avena Sativa ø, Hydrastis Can. ø, Nux Vomica 2x, Cinchona off. ø, Kali Ars. 2x, Acidum Phos. 2x, Saccharum Alb. , Aqua Base q.s., Alcohol Content 8% v/v.

## **DOSAGE:**

**ADULTS:** One Tablespoonful one hour before meals or as prescribed by the physician.

**CHILDREN:** One Teaspoonful one hour before meals or as prescribed by the physician.

**PRESENTATION:** 115ml. & 450ml.

**LORD'S**

**HOMOEOPATHY AT ITS BEST**

[lordshomeopathic.com](http://lordshomeopathic.com)

Information for the use only of a registered medical practitioner or a hospital or laboratory



Seasonal changes might cause allergic symptoms

## LORD'S ALLER KURE TABLETS

*Quick Relief From Allergic Symptoms*

### INDICATIONS

- Runny nose
- Sneezing
- Watery Eyes
- Swelling

**COMPOSITION:** Each Tablet contains equal proportion of:

Ferrum Phos. 3x, Natrum Mur. 6x, Kali. Sulph. 3x, Kali Mur. 3x, Baptisia Tinc. 4x, Bryonia Alba 4x, Causticum 6x, Eupatorium Perf. 3x, Gelsemium Semp. 6x, Sabadilla 6x, Eucalyptus Globulus. 3x, Excipients q.s.to 550 mg.

**DOSAGE: Acute Cases:** 1 Tablet 4 times a day

**Chronic Cases:** 1 Tablet, Twice a day

**Mild to Moderate Cases:** 1 Tablet Thrice a day

**Maintenance Dose:** 1 Tablet, Twice a day or as prescribed by the physician.

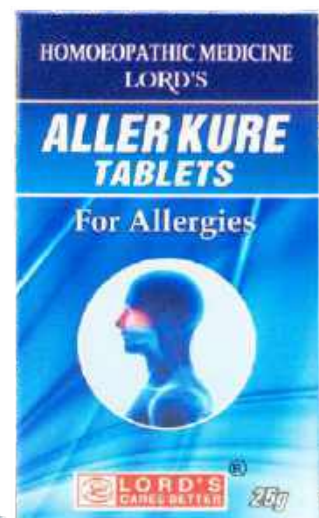
**PRESENTATION:** 25g.

**LORD'S**

**HOMOEOPATHY AT ITS BEST**

[lordshomeopathic.com](http://lordshomeopathic.com)

Information for the use only of a registered medical practitioner or a hospital or laboratory





AST

For Breathlessness due to Asthma  
**LORD'S ASTHAMIN SYRUP**  
*Relieves bronchial spasm*

**INDICATIONS**

- Acute and chronic Asthma
- Bronchial Asthma
- Spasmodic Cough

**COMPOSITION:** Blatta Oriental ø, Justicia Ad ø, Senega ø, Lobella Inflata ø, Ipecacuanha ø, Grindelia Robusta ø, Magnesia Phos 2x, In flavoured syrup base q.s., Alcohol 7% v/v.

**DOSAGE:**

**Adults :**Two Teaspoonful 3 or 4 times a day preferably before meals.

**Children :** One Teaspoonful 3 or 4 times a day preferably before meals.

In very acute case the prescribed doses may be repeated once in 2 hours until desired relief is achieved

**PRESENTATION:** 100ml. 180ml. & 450ml.

**LORD'S**

**HOMOEOPATHY AT ITS BEST**

[lordshomeopathic.com](http://lordshomeopathic.com)



Information for the use only of a registered medical practitioner or a hospital or laboratory





Get complete hair nourishment with **ARO**  
**LORD'S ARNICA HAIR OIL**

For Complete hair care

An Excellent medicated Hair Tonic for Dry Scalp blended with genuine extracts of Jaborandi, Arnica, Cantharis, China, Amla and other reputed Indian Herbs put together in a Base of pure Groundnut Oil.

Arnica Hair Oil keeps the Hair clean, restores the Natural Growth of the Hair & maintains the extra Softness, Gloss & Silky nature of your Hair in a Natural way.

**Directions:** Apply LORD'S ARNICA HAIR OIL evenly on your scalp and massage with fingertips using a circular motion. For best results leave the oil overnight on your scalp and shampoo next morning with LORD'S ARNICA SHAMPOO.

**PRESENTATION:** 100 ml., 200 ml. & 500 ml.

**LORD'S**

**HOMOEOPATHY AT ITS BEST**

lordshomoeopathic.com

Information for the use only of a registered medical practitioner or a hospital or laboratory





Get long and strong hair with  
**LORD'S ARNICA SHAMPOO**  
with extra conditioner

Restores the natural growth of hair

ARS

Directions: Squirt a small amount of Lord's Arnica Shampoo into the palm of your hand. Apply it to your scalp and massage until it lathers. Work the shampoo through your hair, but pay the most attention to the scalp. Rinse your hair and scalp completely.

**PRESENTATION:** 100ml. 200 ml. , 500 ml. and 1 Litre

**BENEFITS**

- ✓ Dual Herb nourishment with extracts of Arnica and China.
- ✓ Maintains the softness, gloss and silky nature of hair.
- ✓ pH controlled formula prevents from further damage of hair.
- ✓ Checks dandruff and falling of brittle hair.

**LORD'S**

**HOMOEOPATHY AT ITS BEST**

[lordshomeopathic.com](http://lordshomeopathic.com)

Information for the use only of a registered medical practitioner or a hospital or laboratory







For Hypotension

## LORD'S BEE PEE DROPS

Normalizes blood pressure

### INDICATIONS

- Low Blood Pressure
- Vertigo Due to Low BP
- Headache due to Low BP

BPD

**COMPOSITION:** Each 10 ml. contains :  
Gelsemium Semp 3x HPI, Conium Mac. 4x  
HPI, Baryta Carb. 30 HPI, Crataegus Oxy.  
4x HPI, Adrenalin HPI 30, China Off. 3x  
HPI, Cactus G. 4x HPI.

**DOSAGE:** 10-15 Drops diluted in half  
cup water twice a day or as prescribed by  
the physician

**PRESENTATION:** 30ml.



**LORD'S**

**HOMOEOPATHY AT ITS BEST**

lordshomoeopathic.com

Information for the use only of a registered medical practitioner or a hospital or laboratory





*For Hypertension*

## LORD'S BEE PEE FORT DROPS

*Normalizes blood pressure*

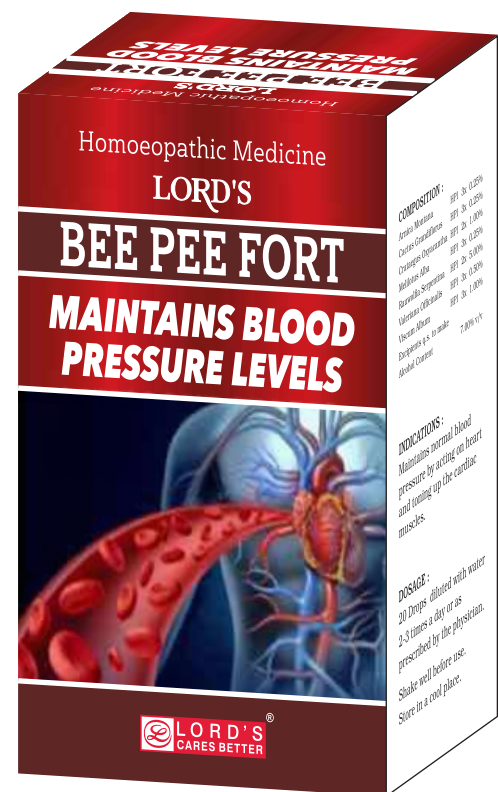
### INDICATIONS

- High Blood Pressure
- Vertigo Due to High BP
- Headache due to High BP
- Palpitation due to High BP
- Sweating due to High BP

**COMPOSITION:** Arnica Montana 3x, Cactus G. 3x, Crataegus Oxy. 2x, Melilotus Alba. 3x, Rauwolfia Serp. 2x, Valeriana Off. 3x, Viscum Album 3x, Excipients q.s. Alcohol Content 7.00% v/v.

**DOSAGE:** 20 Drops diluted with water 2-3 times a day or as prescribed by the physician.

**PRESENTATION:** 30ml.



**BPF**

**LORD'S**

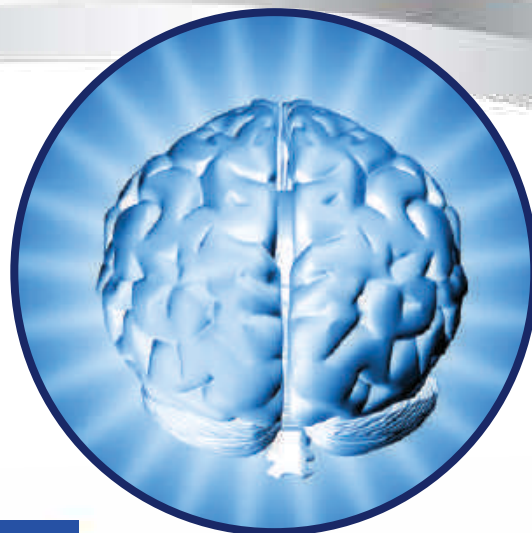
**HOMOEOPATHY AT ITS BEST**

lordshomoeopathic.com

Information for the use only of a registered medical practitioner or a hospital or laboratory



# Improve mental growth with **LORD'S BRENEX SYRUP** For Kids



## **BENEFITS:-**

- ✓ Aids in improving memory and concentration.

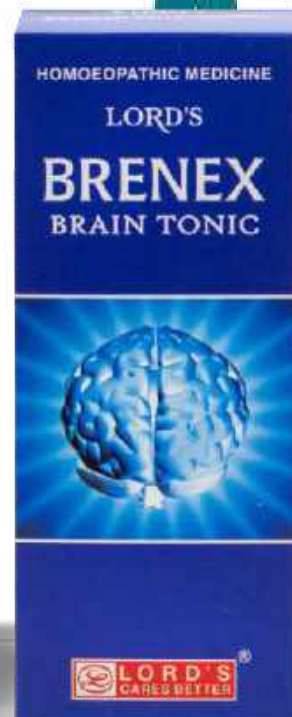
**COMPOSITION:** Each 5ml Contains: Avena Sativa Ø HPI, Alfalfa Ø HPI, Acid Phosphoricum 2x HPI, Anacardium Orientalis 6x HPI, Kali Phosphoricum 3x HPI, Passiflora Incarnata Ø HPI, Melilotus Officinalis Ø HPI, Cinchona Officinalis Ø HPI, Withania Somnifera Ø HPI, Sarsaparilla Ø HPI, Damiana 6 HPI, Caramel Colour, Syrup q.s., Alcohol 12% v/v.

**DOSAGE:** ½ Teaspoonful with lukewarm water twice daily half an hour before breakfast and dinner.

**PRESENTATION:** 115ml. 180ml. & 450ml.



**BRN**



**LORD'S**  
**HOMOEOPATHY AT ITS BEST**

[lordshomeopathic.com](http://lordshomeopathic.com)

Information for the use only of a registered medical practitioner or a hospital or laboratory



For Loss of appetite in Kids

# LORD'S BONNIETONE SYRUP

*Improves appetite*

**COMPOSITION:** Calc Phos. 6x, Ferrum Phos. 6x, Kali Mur. 6x, Natrum Phos 6x, Silicea 6x, Alfalfa 6x, In Flavoured Syrup base. q.s., Alcohol 3% v/v.

**DOSAGE:** One Teaspoonful twice a day or as prescribed by the physician.

**PRESENTATION:** 115ml. & 450ml.

## BENEFITS

- ✓ Improves digestion
- ✓ Improves assimilation of nutrition from food
- ✓ Improves energy levels



BON

**LORD'S**

**HOMOEOPATHY AT ITS BEST**

[lordshomoeopathic.com](http://lordshomoeopathic.com)

Information for the use only of a registered medical practitioner or a hospital or laboratory



Ageing may lead to weaker bones

## LORD'S CALCI FORTE TABLETS

*Strengthens Ageing Bones*

### INDICATIONS

- Weak Bones due to ageing
- Bone loss due to ageing
  - Fractured bones
- Calcium Deficiency

**COMPOSITION:** Each Tablet contains :  
Calcarea Carbonica 3x, Calcarea Fluorica  
3x, Calcarea Phosphorica 3x, Silicea 3x, in  
equal proportions Excipients q.s. to 250  
mg.

### DOSAGE:

**Adults :** 2 Tablets 3 - 4 times a day or as  
prescribed by the physician.

**PRESENTATION:** 25g.

**LORD'S**

**HOMOEOPATHY AT ITS BEST**

[lordshomoeopathic.com](http://lordshomoeopathic.com)



CAL



Tachycardia may lead to palpitations

## **LORD'S CARDOLIN GOLD DROPS**

Normalizes pulse and reduces palpitation

### **INDICATIONS:**

- Palpitation
- Arrhythmias
- Breathlessness
- Weak Pulse

### **COMPOSITION:**

Cactus Grandiflorus Ø, Crataegus Oxyacantha Ø, Strophanthus Hispidus Ø, Convallaria Majalis Ø, Valeriana Officinalis Ø, Aurum Muriaticum Natronatum 4x, Camphora 2x, Alcohol content 50% v/v, Excipients q.s.

**DOSAGE:** 20-30 drops Diluted with water before administration, 3 times daily and for sudden unexpected symptoms-40 drops or as prescribed by the physician.

**PRESENTATION:** 30ml.

**LORD'S**

**HOMOEOPATHY AT ITS BEST**

[lordshomoeopathic.com](http://lordshomoeopathic.com)



**CAR**

Information for the use only of a registered medical practitioner or a hospital or laboratory

For pain due to renal stones

## **LORD'S CALCULI SYRUP**

*Relieves pain and reduces burning sensation  
during urination*



### **INDICATIONS**

- Renal Calculi
- Pain in kidney, ureter & bladder
- Renal Colic
- Pain in urethra during urination

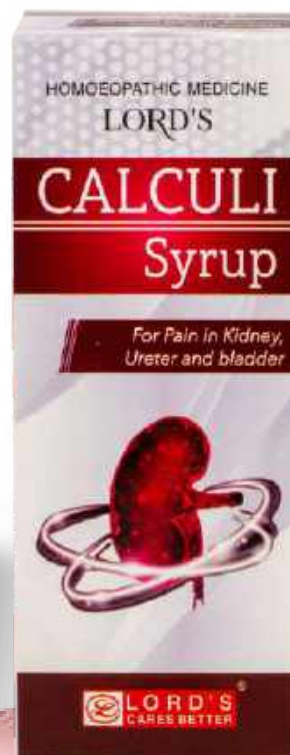
**COMPOSITION:** Each 100 ml. contains: Berberis Vul. Ø, HPI 3%v/v, Cantharis 3x 2% v/v, Acidum Oxalicum 3x 1%v/v, Calcareo Renalis Ø, 2%v/v, Sarsaparilla Ø, 2%v/v, Pareira Brava Ø, 2%v/v, Senecio Aureus Ø 2%v/v, Ocimum Canum Ø, 3%v/v, Excipients Syrup Base q.s. to 100%, Alcohol content 10%v/v.

### **DOSAGE:**

**Adults:** 10 ml, 3-4 times a day.

**Children:** 5 ml, 3-4 times a day or as prescribed by physician

**PRESENTATION:** 115ml. 180 ml. & 450ml.



**CULI**

**LORD'S**

**HOMOEOPATHY AT ITS BEST**

[lordshomeopathic.com](http://lordshomeopathic.com)

Information for the use only of a registered medical practitioner or a hospital or laboratory





New

Ultimate breakthrough for stubborn dandruff

## LORD'S CAMY CANTHALINE

*Anti dandruff Shampoo*

### Benefits

- ✓ Reduces Dandruff
- ✓ Strengthens Hair roots
- ✓ Nourishes the scalp

Lord's Camy Canthaline Shampoo is the ultimate product for stubborn dandruff, especially recommended for Seborrhoea, a greasy condition of the scalp, scaly skin problems and dry scalp. This deep cleansing shampoo's antiseptic property also helps in scalp infection and has a revitalizing effect on the hair.

**Directions:** Squirt a small amount of Lord's Camy Canthaline Shampoo into the palm of your hand. Apply it to your scalp and massage until it lathers. Work the shampoo through your hair, but pay the most attention to the scalp. Rinse your hair and scalp completely.

**Presentation:** 100ml. & 200ml.

**LORD'S**

**HOMOEOPATHY AT ITS BEST**

lordshomoeopathic.com

Information for the use only of a registered medical practitioner or a hospital or laboratory





For lush hair growth and premature greying  
<sup>New</sup>  
**CAMY BLACK K2 ARNICA HAIR OIL**  
*Enriched with Amla, Brahmi, Bhringraj*

**BENEFITS:**

- ✓ Nourishes the scalp and hair shaft.
- ✓ Strengthens hair roots
- ✓ Delays premature greying of hair
- ✓ Prevents excessive hair fall/ premature balding
- ✓ Prevents split ends

Lord's Camy Black K2 hair oil is a premium product prepared from a special herbal concoction of Arnica, Amla, Brahmi, Bhringraj, Til Oil, Coconut Oil, Sesame Oil & Almond Oil. These herbal ingredients revitalize hair by penetrating weak follicles, strengthening weak hair and promoting growth

**Directions:** Gently massage the oil into the scalp for 5-10 minutes. Follow it up with a regular head bath.

**Presentation:** 150 ml.

**LORD'S**

**HOMOEOPATHY AT ITS BEST**

[lordshomeopathic.com](http://lordshomeopathic.com)



CBK2

Information for the use only of a registered medical practitioner or a hospital or laboratory





*For hypercholesterolemia*

# **LORD'S CHOLESTRIL DROPS**

*Normalizes cholesterol levels*

## **BENEFITS**

- ✓ Checks high blood cholesterol levels and triglycerides; improves circulation
- ✓ Improves HDL levels for normal functioning of the body
- ✓ Restores cholesterol balance and checks nervous symptoms associated with High Cholesterol

**COMPOSITION:** Each 30ml. contains  
Chelidonium 12 X HPI 5.00%,  
Cholesterinum 12X HPI 5.00%, Cistus Can. 12X  
HPI 5.00%, Allium Sat. 12X HPI 5.00%, Calc.  
Carb. 12X HPI 5.00%, Phosphorous 12X HPI  
5.00%, Excipients q.s.

**DOSAGE:** 20-30 drops in some water 3-4 times  
a day or as prescribed by physician

**PRESENTATION:** 30ml.

## **INDICATION**

Elevated cholesterol level



**LORD'S**

**HOMOEOPATHY AT ITS BEST**

[lordshomoeopathic.com](http://lordshomoeopathic.com)

Information for the use only of a registered medical practitioner or a hospital or laboratory

**CHO**





Radiant Care For Lusterless,  
Dull And Acne Prone Skin

# LORD'S CLEANO ANTI ACNE FACE WASH

## BENEFITS

- ✓ Helps prevent free radical damage
- ✓ Helps fade dark spots
- ✓ Helps reduce acne

**COMPOSITION:** Tea Tree Oil, Rosemary Extract, Vitamin-E, Aloe vera Extract, Berberis Extract, Glycerin & Excipients

**DIRECTIONS:** Apply a generous amount of Lord's Cleano Facewash on your face and massage in a circular motion and then rinse off. For best results use Lord's Cleano Facewash twice a day.

**PRESENTATION: 50g.**

**LORD'S**

**HOMOEOPATHY AT ITS BEST**

[lordshomeopathic.com](http://lordshomeopathic.com)

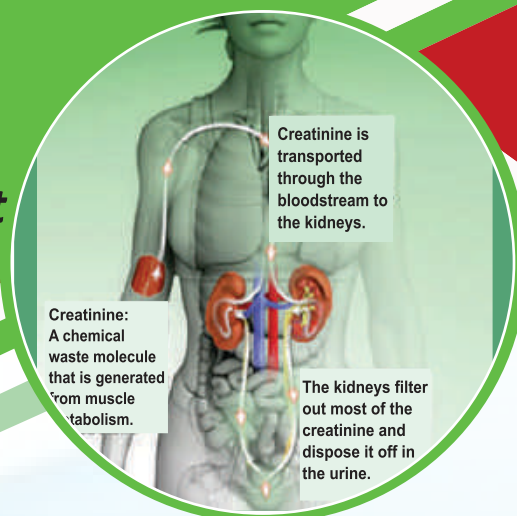


CLNO

Information for the use only of a registered medical practitioner or a hospital or laboratory



*Impaired Kidney functions may lead to elevated Creatinine levels*



## LORD'S CRATIN DROPS

Normalizes creatinine levels

### INDICATION

- Elevated creatinine level
- Irregular KFT

### BENEFITS

- ✓ Improves kidney functioning
- ✓ Maintain creatinine in a normal range

**COMPOSITION:** Eel serum 6 H.P.I 5%, Echinacea 12x H.P.I 5%, Terebinthinae 6 H.P.I 5%, Uranium Nit. 6 H.P.I 5%, Apis Mel. 12x H.P.I 5%, Berb. Vulg. 12x H.P.I 5%, Sarsaparilla 12x H.P.I 5%, Excipients Q.S.

**DOSAGE:** 10-20 Drops 3-4 times a day or as prescribed by the physician

**PRESENTATION:** 30ml.

**LORD'S**

**HOMOEOPATHY AT ITS BEST**

lordshomeopathic.com



Information for the use only of a registered medical practitioner or a hospital or laboratory

CRA





## LORD'S CINERARIA MARITIMA 10% EYE DROPS

### INDICATION

- Increasing difficulty with vision at night
- Sensitivity to light and glare
- Frequent changes in eye glass or contact lens prescription
- Double vision

### COMPOSITION:

Cineraria maritima M.T. HPI 10.00% w/w, Glycerinum HPI 2.00% w/w, Phenyl Mercuric Nitrate I .P. 0.001%w/w, Aqua Distilled Q.S.

### DOSAGE:

Instill 1 or 2 drops in the affected eye, 3 to 6 times daily or as prescribed by the physician

**PRESENTATION: 10ml .**

LORD'S

**HOMOEOPATHY AT ITS BEST**

[lordshomeopathic.com](http://lordshomeopathic.com)

Information for the use only of a registered medical practitioner or a hospital or laboratory





# LORD'S DENGMA SYRUP

A powerful immune booster

## INDICATIONS:

- Sudden high fever due to dengue
- Severe head ache
- Joint and muscle pains
- Vomiting
- Fatigue & pain around the eyes

## BENEFITS

- ✓ Boosts immune system
- ✓ Checks replication of dengue & chikungunya
- ✓ Increases platelet count, white blood cells & neutrophils

## FORTIFIED WITH PROVEN REMEDIES

### COMPOSITION:

Tinospora Cordifolia Ø 0.10ml., Carica Papaya Ø 0.10ml., Ocimum Sanctum Ø 0.05ml., Azadirachta Indica Ø 0.05ml., Rhus Toxicodendron 3X 0.05ml., Eupatorium Perfoliatum 3X 0.05ml., Gelsemium Sempervirens 3X 0.05ml., Belladonna 3X 0.05ml., In Syrup Base.

### DOSAGE: For Prevention

**Adults** - 15 - 20 ml twice a day

**Children** - Half the adult dose or as prescribed by the physician

**FOR MANAGEMENT:** 15-20 ml. 3-4 Times a day or as prescribed by the physician

**PRESENTATION:** 180 ml. & 450 ml.

**LORD'S**

**HOMOEOPATHY AT ITS BEST**

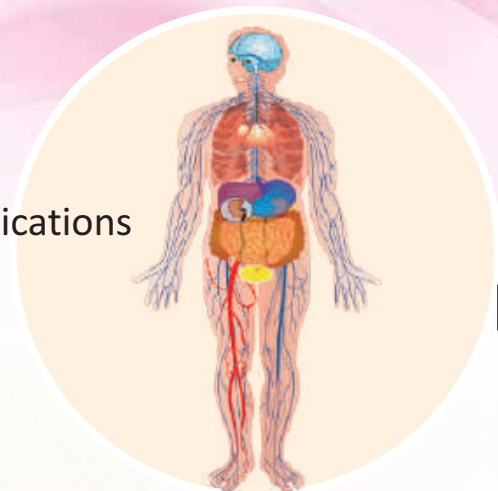
lordshomoeopathic.com



Uncontrolled diabetes may lead to severe complications

## LORD'S DIBO KURE TABLETS

*Normalizes blood sugar levels*



DIBO

### INDICATIONS

- High blood sugar levels
- Frequent urination
- Increased thirst
- Muscular cramps

### BENEFITS

- ✓ Blood sugar regulation.
- ✓ Glucose metabolism

**COMPOSITION:** Each Tablet contains : Crataegus Oxyacantha 3x, Cuprum Arsenicosum 6x, Acidum Phosphoricum 3x, Syzygium Jambolanum 3x, Cephalandra Indica 3x, Gymnema Sylvestre 3x, Uranium Nitricum 3x, In equal proportion Excipients q.s. to 1 Tablet of 100 mg.

### DOSAGE:

**Adults:** 4 Tablets 4-6 times daily

**Children:** 2 Tablets 4 - 6 times daily or as prescribed by the physician.

**PRESENTATION:** 25 g.



**LORD'S**

**HOMOEOPATHY AT ITS BEST**

[lordshomeopathic.com](http://lordshomeopathic.com)

Information for the use only of a registered medical practitioner or a hospital or laboratory





**DIGN**

GERD\* may lead to stomach discomfort

## **LORD'S DIGE-TONE SYRUP**

*Relieves the symptoms of GERD*

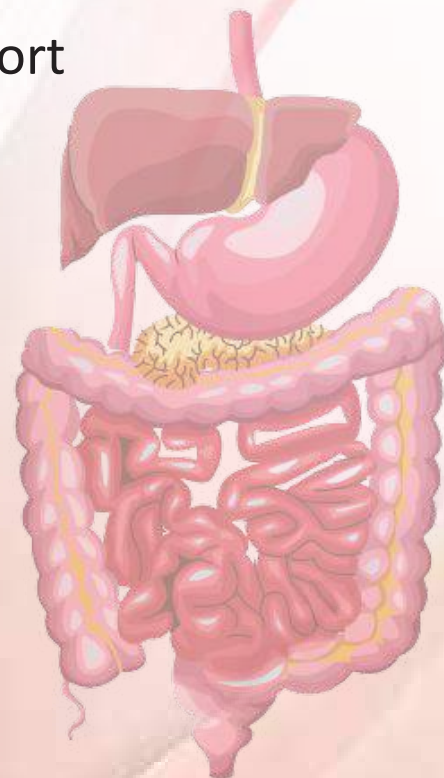
### **INDICATIONS**

- Vomiting
- Abdominal Discomfort
- Uncontrolled belching
- Dyspepsia and Exhaustion

**COMPOSITION:** Piper Nig. 2D, Nux Vom 3D, Thymus Serphyllieum 5D, Asafoetida 3D, Hydrastis can 3D, Lycopodium Clavatum 2D, Coriandrum Sativa 5D, Carbo Veg. 5D, Syrup base, Alcohol Content 5.16% v/v.

**DOSAGE:** Children half teaspoon, Adults one teaspoonful twice daily after meals or as directed by the physician.

**PRESENTATION:** 115ml. & 450ml.



**LORD'S**

**HOMOEOPATHY AT ITS BEST**

[lordshomeopathic.com](http://lordshomeopathic.com)

\* Gastroesophageal Reflux Disorder

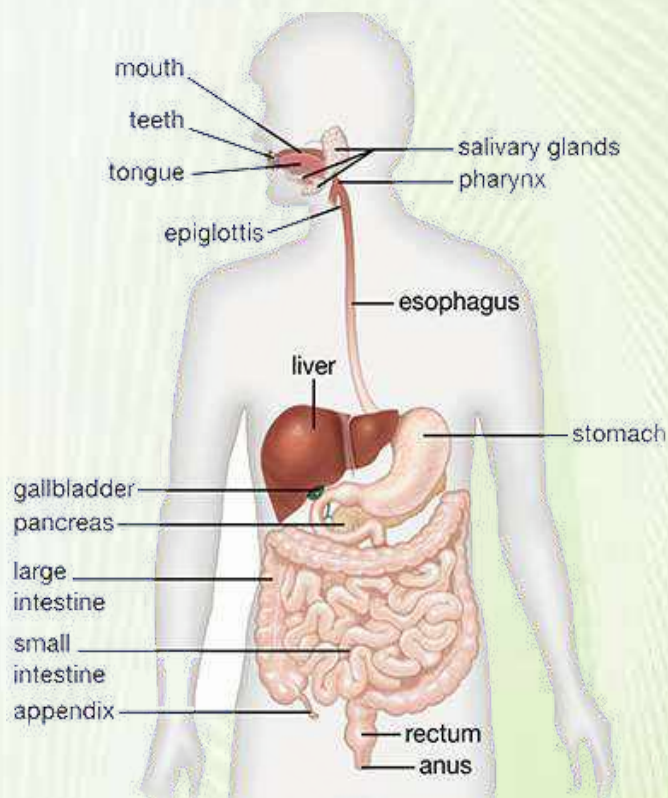
Information for the use only of a registered medical practitioner or a hospital or laboratory



*Indigestion may cause unwanted discomfort*

## LORD'S DIGESTO SYRUP

*Regularizes digestion*



### INDICATIONS

- Acidity
- Flatulence
- Heartburn
- Constipation
- Altered bowel habits

**COMPOSITION:** Piper Nigrum 2x, Nux Vomica 3x, Thymus Serpyllum 5x, Asafoetida 3 x ,Hydrastis Canadensis 3 x, Lycopodium Clavatum 2x, Coriandrum Sativum 5x, Carbo Vegetabilis 5x, Deionised Water & Excipients.q.s. to make 100% v/v, Alcohol Content 8.0% v/v.

### DOSAGE:

**Adults:** One teaspoonful three times daily after meals

**Children:** Half the adult dosage or as prescribed by the physician.

**PRESENTATION:** 115ml. 180ml. & 450ml.

**LORD'S**

**HOMOEOPATHY AT ITS BEST**

lordshomeopathic.com



# DILUTIONS

Dilutions are the backbone of Homoeopathy. Since the quantum of medicament is untraceable and undetectable, the process to manufacture it and the infrastructure deployed is critically important.

- ✓ We Procure Extra Neutral Alcohol Which Is The Purest Form Of Alcohol Which Further Goes Through Multiple Tests Like Aldehyde Test, Ketones Test, Fusel Oil Test Etc Before Being Used For Manufacturing Of Dilutions.



- ✓ Potencies Are Raised In house Through Automatic Potentiser With Highest Quality of Mother Tinctures And High Grade Chemicals

- ✓ We Have Deployed AHUs And HEPA Filters To Control Environment. All Equipment Used is Of 316 Grade Stainless Steel. The Core Manufacturing Area Is Provided With Laminar Flow Housing Which Maintains Positive Pressure With Pure Air To Ensure Zero Contamination.



***The Quality Of Lord's Dilutions Is The Result Of Stringent Quality Control Parameteres & Manufacturing Processes.***

**PRESENTATION:** LORD'S offers a vast range of dilutions in potencies of 3X, 6, 30, 200, 1M, 10M, 50M & CM in packs of 30ml, 100ml. and 450ml.

**LORD'S**

**HOMOEOPATHY AT ITS BEST**

[lordshomoeopathic.com](http://lordshomoeopathic.com)





# LORD'S ELIXIR FORTE SYRUP

## *A Restorative Tonic*

### INDICATIONS

- Lack of appetite
- Convalescence
  - Anaemia
  - Fatigue

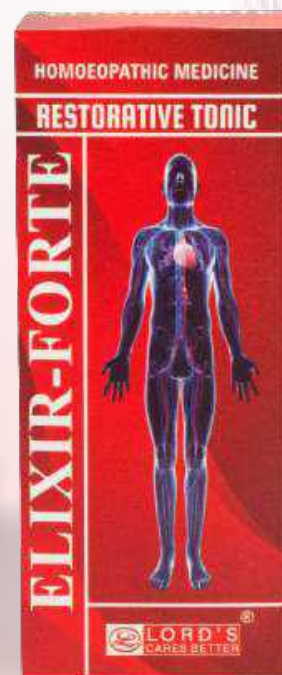
### COMPOSITION:

Avena Sativa Ø, China off 2x, Ginseng Ø, Hydrastis can Ø, Alfalfa Ø, Acidum Formicum 4x, Lecithin 2x, Coca Ø, Ashoka 2x, Manganum Acet 2x, Deionised Water & Excipients Alcohol contents 9.1% v/v.

### DOSAGE:

**Adults:** One tablespoonful, three times a day before meals or as directed by the physician

**Children:** One teaspoonful, three times a day before meals or as directed by the physician



**PRESENTATION: 180ml. & 450ml.**

**LORD'S**

**HOMOEOPATHY AT ITS BEST**

[lordshomoeopathic.com](http://lordshomoeopathic.com)

Information for the use only of a registered medical practitioner or a hospital or laboratory



# LORD'S EL - TRIM DROPS

**INDICATION**  
Tendency towards  
excess weight gain



**COMPOSITION:** Each 5ml. contains : Fucus Ves. 2x, Phytolacca Berry 3x, Amm. Brom. 2x, Pulsatilla Q, Thyroidinum 6x, Deionised Water and Excipients. q.s., Alcohol Content 16.65% v/v.

**DOSAGE:** 20 Drops of EL-TRIM drops diluted with half tablespoon of water to be taken 10 minutes before meals twice daily or as prescribed by the physician.

**PRESENTATION:** 30ml

**CAUTION:** Not to be used during pregnancy & lactation

**LORD'S**

**HOMOEOPATHY AT ITS BEST**

[lordshomeopathic.com](http://lordshomeopathic.com)





# LORD'S EYERITE EYE DROPS

*For quick relief from irritation, redness & dry eyes*

## INDICATION

- Conjunctivitis
- Redness of eyes
- Dry eyes
- Irritation and watering of eyes

EYR

## COMPOSITION:

Euphrasia Officinalis MT 10.00%w/w, Sodium Methyl Hydroxybenzoate I.P. 00.10%w/w, Isotonic Solution Q.S.

**DOSAGE:** Instill 1 or 2 drops in the affected eye, 3 to 6 times daily or as prescribed by the physician.

**PRESENTATION: 10ml.**



**LORD'S**

**HOMOEOPATHY AT ITS BEST**

[lordshomoeopathic.com](http://lordshomoeopathic.com)

Information for the use only of a registered medical practitioner or a hospital or laboratory



Iron deficiency may lead to anaemia

## **LORD'S FERRUM FORTE IRON TONIC**

*Normalizes blood haemoglobin levels*

FER

**COMPOSITION:** Ferrum Lacticum 1x, Ammonium Aceticum 1x, Nat Phos. 1x, Kali. Phos. 1x, Acidum Citricum 1x, Acidum Phos. 1x, Glycerinum, Syrup base, Alcohol Content 5.4% v/v.

**DOSAGE:** One or two teaspoonful with cold water three times a day or as directed by the physician.

**PRESENTATION:** 115ml. 180ml. & 450ml.

### **INDICATIONS**

- Iron deficiency
- Malnutrition
  - Anaemia
  - Anorexia
- General Debility



**LORD'S**

**HOMOEOPATHY AT ITS BEST**

[lordshomeopathic.com](http://lordshomeopathic.com)

Information for the use only of a registered medical practitioner or a hospital or laboratory





®

For hyperthermia

# LORD'S FAVORITE SYRUP

*Helps in normalizing body temperature*

FEV

## INDICATIONS

- Mild to high fever
- Shivering
- Muscle aches
- General weakness

**COMPOSITION:** Each 5ml Contains : Aconite Nap. Ø, Bryonia Alba Ø, China Officinalis Ø, Gelsemium Semp. Ø, Nux Vomica Ø Rhus Tox. Ø, Calc. Phos. 1x, Caffeinum 1x, Ferrum Phos. 1x, Nat. Sulph 1x, Nat. Salit. 1x, Syrup q.s., Alcohol Content 7.02% v/v.

## DOSAGE:

**Adults:** 1 Teaspoonful with water 4-5 times a day.

**Children:** ½ Teaspoonful with water 4 - 5 times a day or as prescribed by the physician.

**PRESENTATION:** 60 ml., 115ml. & 450 ml.

**LORD'S**

**HOMOEOPATHY AT ITS BEST**

lordshomoeopathic.com

Information for the use only of a registered medical practitioner or a hospital or laboratory



Seasonal changes may cause Flu like symptoms

## LORD'S FLU RITE TABLETS

*Relieves the symptoms of Flu*

### INDICATIONS

- Mild to high fever
- Watery nose and eyes
- Dizziness, drowsiness
- Sneezing

**COMPOSITION:** Each Tablet contains equal proportion of: Arsenicum Album 200, Gelsemium Semper virens 200, Eupatorium Perfoliatum 200, Bellis Perennis 200, Bryonia Alba 200, Excipients q.s. to 250 mg.

### DOSAGE:

#### Adults:

**Acute Condition:** 2 Tablets every 2 hrs.

**Chronic Condition:** 2 Tablets thrice daily.

**Children:** Half the adult dose or as prescribed by the physician.

**PRESENTATION:** 25g

**LORD'S**

**HOMOEOPATHY AT ITS BEST**

[lordshomeopathic.com](http://lordshomeopathic.com)





For various fungal infections

FUNG

# LORD'S FUNGIRITE DROPS

*Counteracts the growth of fungus*

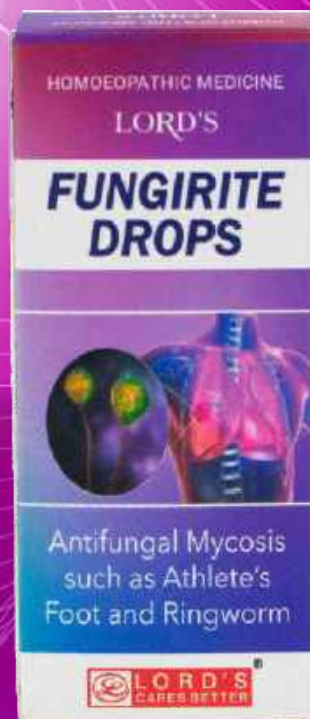
## INDICATIONS

- Skin irritation due to infection
- Redness or darkening of skin due to infection
- Ringworm
- Athlete's foot

**COMPOSITION:** Each 5ml.  
Contains: Bacillinum Pulmo 12C  
0.5ml, Chrysarobinum 3x0.5mg,  
Thuja Occidentalis 3x 0.5ml,  
Torula Cerevisiae 1x 0.5mg,  
Alcohol Content 18% v/v

**DOSAGE:** 10-15 drops in some  
water 4-5 times a day or as  
prescribed by the physician.

**PRESENTATION:** 30ml.



**LORD'S**

**HOMOEOPATHY AT ITS BEST**

lordshomoeopathic.com

Information for the use only of a registered medical practitioner or a hospital or laboratory

Being overweight leads to various health complications

## **LORD'S GARCINIA SLIMFIT TABLETS**

*A Natural fat metabolizer*

### **BENEFITS**

- ✓ Helps fat metabolism
- ✓ Supports appetite suppression
- ✓ Increases serotonin levels
- ✓ Detoxifies digestive system



**COMPOSITION:** Each film coated tablet contains Garcinia cambogia 400 mg, Green Coffee Bean Extract 25mg, Caralluma fimbriata 100mg, Guggul 25 mg

**DOSAGE:** 2 tablet once daily 1 hr before meal, or as prescribed by the dietician / Physician.

**PRESENTATION:** 30 Tablets



**LORD'S**

**HOMOEOPATHY AT ITS BEST**

[lordshomeopathic.com](http://lordshomeopathic.com)

Information for the use only of a registered medical practitioner or a hospital or laboratory



# LORD'S GASTROLIN SYRUP

GAS

*For quick relief from acidity & gas with no side effects*

## INDICATIONS

- Acidity
- Heartburn
- Flatulence
- Gastric disorder

**COMPOSITION:** Natrum Phosphoricum 2x, Capsicum ann 2x, Robinia Pseudocacia 2x, Acidum Sulphuricum 3x, Phosphorous 5x, Syrup Base q.s., Alcohol Content 9% v/v.

**DOSAGE:** 1 - 2 Teaspoonful 3 times a day before meals with water. It is recommended to have a suitable diet to activate this therapy.

**PRESENTATION:** 115ml. 180ml. & 450ml.



**LORD'S**

**HOMOEOPATHY AT ITS BEST**

[lordshomeopathic.com](http://lordshomeopathic.com)

Information for the use only of a registered medical practitioner or a hospital or laboratory

# **LORD'S GASTROLIN PLUS TABLETS**

*For quick relief from acidity & gas with no side effects*

## **INDICATIONS**

- Hyperacidity
- Bloating
- Uncontrolled belching
- Nausea
- Diarrhoea or constipation
- Stomach gripping

**COMPOSITION:** Each Tablet contains equal proportions of : Robinia pseudo 2x, Capsicum Ann. 3x, Phosphorous 5x, Natrum Phos. 2x, Excipients q.s.to 550mg..

## **DOSAGE:**

**Adults:** 1 Tablet 3 times a day.

**Children:** 1 Tablet 2 times a day or as prescribed by the physician.



**LORD'S**

**HOMOEOPATHY AT ITS BEST**

[lordshomoeopathic.com](http://lordshomoeopathic.com)

Information for the use only of a registered medical practitioner or a hospital or laboratory





GIN

Modern hectic lifestyle drains energy  
**LORD'S GINSENG TABLETS**  
Aids in counteracting fatigue

**INDICATIONS**

- ✓ Boosts immunity
- ✓ Increases energy levels
- ✓ Improves vitality
- ✓ Sharpens cognitive functions

**COMPOSITION:** Ginseng 1x in Lactose base.

**DOSAGE:** 1-2 Tablets thrice a day or as prescribed by the physician

**PRESENTATION:** 25g., 450g. & 40 Tablets (Blister Packaging).



**LORD'S**

**HOMOEOPATHY AT ITS BEST**

[lordshomoeopathy.com](http://lordshomoeopathy.com)

Information for the use only of a registered medical practitioner or a hospital or laboratory

Swollen Glands may distort metabolic functions

# LORD'S GLANDIN TABLETS

*Corrects Glandular functions*

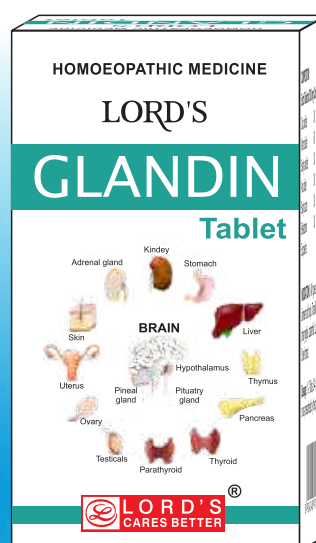
## INDICATIONS

Various types of glandular ailments

**COMPOSITION:** Each tablet of 330 mg. contains : Calc. Iodide 3X 66 mg, Merc. Iodide 6X 66mg, Baryta Iodide 3X 66mg, Ars. Iodide 3X 66mg, Baryta Carb 3X 66ml, Belladonna 3X 0.03ml, Excipients q.s.

**DOSAGE:** 1-2 Tablets 3-4 times in a day or as prescribed by the physician.

**PRESENTATION:** 25g. & 450g.



**LORD'S**

**HOMOEOPATHY AT ITS BEST**

[lordshomoeopathic.com](http://lordshomoeopathic.com)

Information for the use only of a registered medical practitioner or a hospital or laboratory



**GLO**



Get perfect looking skin everyday with

# LORD'S GLOW CARE CREAM

Over 30 years of glowing skincare

## INDICATIONS

- Acne blotches
- Dark circles under eyes
- Dark spots
- Lusterless skin
- Pimples

**COMPOSITION:** Berb Aquí Ø, Hydrastis Ø, Ledum Pal Ø, alcohol 2.5% v/w in a Non greasy base

**DIRECTION:** Rub Lord's Glow Care cream gently on your face and skin with circular motion of your finger tips. Leave the application overnight

**PRESENTATION: 25g.**



**LORD'S**

**HOMOEOPATHY AT ITS BEST**

[lordshomeopathic.com](http://lordshomeopathic.com)

Information for the use only of a registered medical practitioner or a hospital or laboratory

**GLOD**



Get perfect looking skin everyday with  
**LORD'S GLOW CARE DROPS**  
Over 30 years of glowing skincare

**INDICATIONS**

- Acne blotches
- Dark circles under eyes
- Dark spots
- Lusterless skin
- Pimples

**COMPOSITION:** Berb Aquil 2x, Kali Brom 3x, Pulsatilla N 2x, Thuja Occ 4x, Sepia 5x, Alcohol 7% v/v, Excipients q.s.

**DOSAGE:** Mix 10 drops in half table spoon water thrice daily or as prescribed with the physician. Use this alongside Lord's Glow Care cream for unique double action

**PRESENTATION: 30ml.**

**LORD'S**

**HOMOEOPATHY AT ITS BEST**

lordshomoeopathic.com



Information for the use only of a registered medical practitioner or a hospital or laboratory





Premature Greying & excessive hair loss is  
a common issue

## LORD'S HAIR MONT DROPS

*An effective solution for premature greying  
and excessive hair loss*

HMNT

### BENEFITS

- ✓ Rejuvenates dead hair roots
- ✓ Prevents premature greying
- ✓ Offers double effects of external & internal treatment

### COMPOSITION:

**INTERNAL:-** Acidum Phos. 6x, Lycopodium C 3x, Jaborandi 2x, Weisbaden 3x, Deionised Water & Excipients q.s.to 5ml. Alcohol 61.30%v/v.

**EXTERNAL :-** China Ø, Arnica Ø, Jaborandi Ø, Cantharis Ø, Glycerin, Alcohol 18.95% v/v.

### DOSAGE:

#### INTERNAL:-

**Children:-** 5 drops diluted with half table spoon of water twice daily.

**Adults:-** 10 drops diluted with half table spoon of water twice daily.

**EXTERNAL:-** Add 15-20 drops of HAIR-MONT in a cup of luke warm water, and massage gently into hair. Wash and dry hair after 10-15 minutes. Use any oil preferably coconut based oil.

**PRESENTATION: Twin Pack of 30 ML.**

**LORD'S**

**HOMOEOPATHY AT ITS BEST**

[lordshomoeopathic.com](http://lordshomoeopathic.com)



Information for the use only of a registered medical practitioner or a hospital or laboratory

# Hernia is debilitating **LORD'S HERNIL DROPS**

*Relieves the symptoms associated with hernia*

HERN

## INDICATIONS

- Pain or swelling due to hernia
- Nausea associated with hernia
- Protrusion of an organ through the cavity wall

**COMPOSITION:** Each 5ml contains: NUX VOM. 6X H.P.I. 0.5ml., COCCULUS IND. 6X H.P.I. 0.5ml., BELLADONNA 6X H.P.I. 2.0ml., LYCOPODIUM C. 6X H.P.I. 1.0ml., PLUMBUM MET 6X H.P.I. 1.0 ml.

## DOSAGE:

**ADULTS :** 10-15 drops in water, 3 times a day, one hour before meals or as prescribed by the physician.

**CHILDREN:** Half the adult dose or as prescribed by the physician.

**PRESENTATION: 30ml.**



**LORD'S**

**HOMOEOPATHY AT ITS BEST**

[lordshomoeopathic.com](http://lordshomoeopathic.com)

Information for the use only of a registered medical practitioner or a hospital or laboratory



# LORD'S HITEUP TABLETS

*Promotes optimum growth of height*

HITE

## BENEFITS

- ✓ Promotes maximum absorption of macro & micro nutrients
- ✓ Promotes healthy bone growth
- ✓ Aids in optimum growth of height

**COMPOSITION:** Baryta Carb 200 HPI, Silicea 200 HPI, Thuja Occ.200 HPI, Calc.Phos 200 HPI

**DOSAGE:** One tablet Twice a week or as prescribed by physician.

**PRESENTATION:** 12g. & 25g.



**LORD'S**

**HOMOEOPATHY AT ITS BEST**

[lordshomoeopathic.com](http://lordshomoeopathic.com)

Information for the use only of a registered medical practitioner or a hospital or laboratory

# LORD'S JABORANDI HAIR OIL

JABO

Comprehensive hair treatment

## BENEFITS

- ✓ CHECKS HAIR FALL
- ✓ PROMOTES HAIR GROWTH

**COMPOSITION:** Each 100 ml. contains: jaborandi (Pilocarpus Microphyllus) HPI 10% w/w, Antioxidant (B.H.T. & Sorbic Acid) 1% w/w, Ground Nut oil q.s.

**Directions:** Apply LORD'S JABORANDI HAIR OIL evenly on your scalp and massage with fingertips using a circular motion. For best results leave the oil overnight on your scalp and shampoo next morning with LORD'S ARNICA SHAMPOO.

**PRESENTATION:** 100ml. 200ml & 500ml .

**LORD'S**

**HOMOEOPATHY AT ITS BEST**

[lordshomoeopathic.com](http://lordshomoeopathic.com)

Information for the use only of a registered medical practitioner or a hospital or laboratory







# LORD'S KOUGHURE SYRUP & TABLETS

For Quick relief from cough and congestion

## INDICATIONS :

- Dry cough
- Spasmodic cough
- Sore throat or throat irritation
- Productive cough



## COMPOSITION:

**SYRUP:** Bryonia Alba 2x, Ipecac 3x, Antim Tart 3, Phosphorous 3, Drosera 1x, Justicia Ad 2x, Syrup base q.s., Alcohol 7% v/v.

**TABLETS:** Each Tablet contains equal proportion of : Bryonia Alba 3x, Ipecacuanha 3x, Antimonium Tart. 6x, Phosphorus 6x, Drosera Rot. Q, Justicia Ad. 2x, Excipients q.s.to 550 mg.

## DOSAGE:

**SYRUP: Adults:** One Tablespoonful every three hours or as directed by the physician.

**Children:** Half Teaspoonful Every three hours or as directed by the physician.

**TABLETS: Adults:** One Tablet 4 times a day.

**Children:** One Tablet 2 times a day or as prescribed by the physician.

## PRESENTATION:

**SYRUP:** 60ml., 180ml. & 450ml.

**TABLETS:** 25 g.



**LORD'S**

**HOMOEOPATHY AT ITS BEST**

lordshomoeopathic.com

Information for the use only of a registered medical practitioner or a hospital or laboratory

LDNT



# LORD'S LORDENT TOOTHPASTE

*Over 30 years of dental care*

**Lord's Lordent Toothpaste For Active Herbal Protection**

## TRIPLE ACTION FORMULA

- ✓ FRESHENS
- ✓ REPAIRS
- ✓ PROTECTS

Lordent's Triple Action Formula Is Most Suitable For Sensitive Teeth And Gums Providing Rapid Relief And Complete Oral Protection.

**DIRECTION:** Use LORD'S LORDENT TOOTHPASTE to brush your teeth twice a day or as prescribed by the physician.

**PRESENTATION: 100 G.**



**LORD'S**

**HOMOEOPATHY AT ITS BEST**

[lordshomoeopathic.com](http://lordshomoeopathic.com)

Information for the use only of a registered medical practitioner or a hospital or laboratory





Get benefits of 2 pastes in 1

## LORD'S LORDENT 2 in 1 TOOTHPASTE

For complete oral care

### BENEFITS:

- ✓ IMPROVES GUM HEALTH
- ✓ FIGHTS CAVITIES
- ✓ FRESHENS BREATH
- ✓ PROTECTS ENAMEL

**COMPOSITION:** Herbal formula of well known herbs like Calendula, Kreosotum & Plantago in a paste & gel form which is 100% vegetarian and has no chemical bleach.

**DIRECTION:** Use LORD'S LORDENT 2 in 1 TOOTHPASTE to brush your teeth twice a day or as prescribed by the physician.

**PRESENTATION: 100 G.**



**LORD'S**

**HOMOEOPATHY AT ITS BEST**

[lordshomoeopathic.com](http://lordshomoeopathic.com)

Information for the use only of a registered medical practitioner or a hospital or laboratory



# LORD'S LEUCO-R SYRUP

*Relieves the symptoms of leucorrhoea*

## INDICATIONS :

- Excessive vaginal discharge
- Menstrual Cycle disorders
- Cramping pain
- Frequent and profuse urination

**COMPOSITION:** Janosia Ashoka Ø HPI, Hydrastis Can. 3x HPI, Pulsatilla Nig. 3x HPI, Viburnum Opu. 2x HPI, Hemidesmus Ø HPI, Thalaspia B.P. 2x HPI, Sepia 6x HPI, Borax 6 HPI, Ova Tosta 6 HPI, Eupion 12x EHP, Aletris F. 2x HPI, Excipients, q.s., Alcohol Content less than 12% v/v.

**DOSAGE:** 10 ml 3-4 times a day or as prescribed by the physician

**PRESENTATION:** 115 ml. 180 ml. & 450 ml.



**LORD'S**

**HOMOEOPATHY AT ITS BEST**

[lordshomoeopathic.com](http://lordshomoeopathic.com)

Information for the use only of a registered medical practitioner or a hospital or laboratory





# LORD'S SPECIALITY DROPS

**LORD'S SPECIALITY DROPS** have been carefully formulated by keeping in mind various modern day illnesses which prevent us from fully enjoying our lives with our loved ones.

**LORD'S SPECIALITY DROPS GIVE A HOLISTIC, LONG TERM AND SAFE SOLUTION FROM A WIDE SPECTRUM OF AILMENTS.**

## **LIVER DROPS**

**Indication :** For functional or organic complaints of gallbladder and liver, hepatitis, abdominal swelling, bitter taste of mouth.

## **RHEUMA DROPS**

**Indication :** For back pain of unknown origin, painful conditions of muscles and bones, which goes bad with change of climate.

## **PILES DROPS**

**Indication :** For anal fissures, haemorrhoids associated with itching and bleeding.

## **PROSTATITIS DROPS**

**Indication :** For acute and chronic prostatitis.

## **DIABETES DROPS**

**Indication :** For diabetes and hyperglycaemia.

## **SINUS DROPS**

**Indication :** For sinusitis, acute and chronic catarrh of nose, lack of olfaction.

## **WORMS DROPS**

**Indication :** For anthelmintic worms of all types and sizes.

## **BLOOD PURIFIER DROPS**

**Indication :** For impurities in blood, it helps to purify the blood on account of disease. It treats pimples in young boys & girls at puberty age.

## **PSORIASIS DROPS**

**Indication :** Recommended for psoriasis, vulgaris, psoriasiform eczema.

## **SCIATICA DROPS**

**Indication :** Very useful in sciatic disorders including tingling sensation in the lower legs

**PRESENTATION: 30ml.**



**LORD'S**

**HOMOEOPATHY AT ITS BEST**

[lordshomoeopathic.com](http://lordshomoeopathic.com)

Information for the use only of a registered medical practitioner or a hospital or laboratory

# LORD'S L DROPS

*Range of Specially formulated drops for various ailments.*

- |                                      |                                    |                                 |
|--------------------------------------|------------------------------------|---------------------------------|
| L 101 Asthma Drop                    | L 120 Eczema Drops                 | L 144 Nerve and Sleep Drops     |
| L 102 Albuminuria Drops              | L 121 Epilepsy Drop                | L 145 Neural Drop               |
| L 103 Acne Drops                     | L 122 Essentia Aurea-Gold Drops    | L 146 Nausea Drops              |
| L 104 Right Side Abdominal Drops     | L 123 Gynae Drops                  | L 147 Neuralgia Drops           |
| L 105 Left Side Abdominal Drops      | L 124 Glandular Drops for Men      | L 148 Nocturnal Drops           |
| L 106 Anasarca Drops                 | L 125 Glandular Drops for Women    | L 149 Obesity Drops             |
| L 107 Arthralgia Drops               | L 126 Heart Drops                  | L 150 Pleirisy Drops            |
| L 108 Brain Drops                    | L 127 Hemorrhoidal Drops           | L 151 Prostatitis Drops         |
| L 109 Blood Purifier Drops           | L 128 haematinic Drops             | L 152 Pulmonic Drops            |
| L 110 Cough Drops                    | L 129 Hyperhidrosis Drops          | L 153 Pulmonary Drops           |
| L 111 Calcification Drops            | L 130 Hypochondriacal Drops        | L 154 Psoriasis Drops           |
| L 112 Cardiopulmonary Drops          | L 131 Herpes Drops                 | L 155 Pancreas Drops            |
| L 113 Cardiac Arrhythmia Drops       | L 132 Inflammation Drops           | L 156 Rheuma Drops              |
| L 114 Drops for Circulatory Debility | L 133 Influenza Drops              | L 157 Reconstituent Drops       |
| L 115 Climacteric Drops              | L 134 Intestinal Colic Drops       | L 158 Renal Drops               |
| L 116 Diarrhoea Drops                | L 135 Injury Drops                 | L 159 Recalcifying Drops        |
| L 117 Dysmenorrhea, Amenorrhea Drops | L 136 Impaired Circulation Drops   | L 160 Stomach Drops             |
| L 118 Diabetes Drops                 | L 137 Intercostal Drops            | L 161 Sexual Neurasthenia Drops |
| L 119 Dysmenorrhea Drops             | L 138 Joint Drops                  | L 162 Stimulant Drops           |
|                                      | L 139 Kidney and Bladder Drops     | L 163 Sinus Drops               |
|                                      | L 140 Liver and Gall Bladder Drops | L 164 Sciatica Drops            |
|                                      | L 141 Laryngeal Drops              | L 165 Tumour Drops              |
|                                      | L 142 Migraine and Neuralgia Drops | L 166 Teething Aches Drops      |
|                                      | L 143 Measles Drops                | L 167 Thyrotoxic Drops          |
|                                      |                                    | L 168 Vitality Drops            |
|                                      |                                    | L 169 Vertigo Drops             |
|                                      |                                    | L 170 Veins Drops               |
|                                      |                                    | L 171 Worms Drops               |

**DOSAGE:** 10-15 Drops in one teaspoonful of water to be taken empty stomach before meals 3 times a day or as prescribed by the physician.

**PRESENTATION:** 30ml.

**LORD'S**

**HOMOEOPATHY AT ITS BEST**

lordshomoeopathic.com







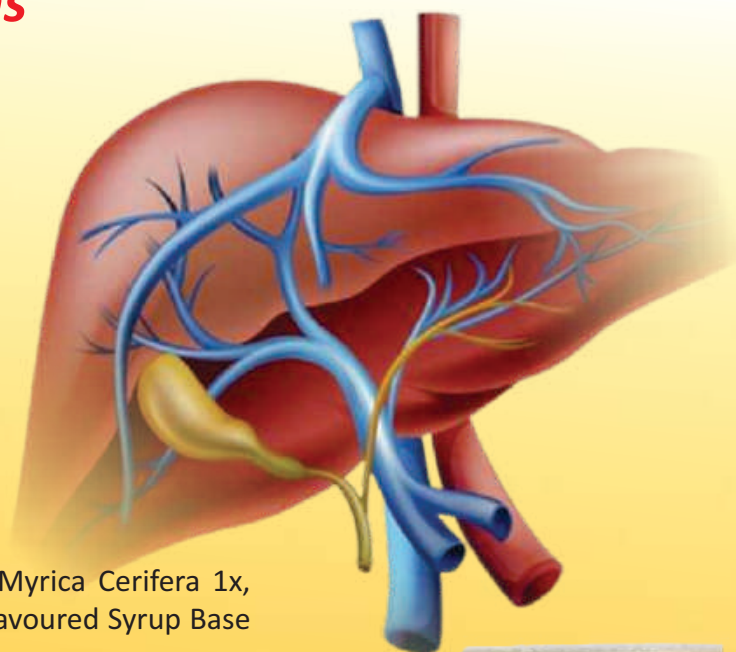
Impaired Liver functions may lead to multiple complications

# LORD'S LIVOTONE SYRUP

*Normalizes liver functions*

## INDICATIONS :

- Jaundice
- Sluggish liver
- Hepatitis
- Biliousness
- Enlargement of liver



**COMPOSITION:** Kalmegh 1x, Carica Pap. 2x, Myrica Cerifera 1x, Chelidonium Majus 1x, Chionanthus V. 1x, In Flavoured Syrup Base q.s., Alcohol content 3% v/v.

## DOSAGE:

**Adults:-** One teaspoon twice daily or as prescribed by the physician

**Children:-** Half teaspoon twice daily before meals or as prescribed by the physician

## If having Jaundice :

**Adults:-** One teaspoon every three hours or as prescribed by the physician.

**Children:-** Half teaspoon every three hours or as prescribed by the physician.

**PRESENTATION:** 100ml. 180ml. & 450ml.

**LORD'S**

**HOMOEOPATHY AT ITS BEST**

[lordshomoeopathic.com](http://lordshomoeopathic.com)



MEN



Irregular menstruation is debilitating

## LORD'S MENSORITE SYRUP

*Regularizes the menstrual cycle*

### BENEFITS

- ✓ Restoration of disturbed menstrual cycle
- ✓ Checks amenorrhea, leucorrhoea & menorrhagia

**COMPOSITION:** Pinus Lambertiana Ø, Pulsatilla Nig Ø, Caulophyllum T. Ø, Gossypium H. Ø, Syrup base q.s., Alcohol 11% v/v.

**DOSAGE:** 1-2 Teaspoonful with water twice daily or as prescribed by the physician. Please note according to the built up of the patient the quantity of the medicine can be increased or decreased.

**PRESENTATION:** 115ml, 180ml. & 450ml.

**CONTRAINDICATIONS:** Pregnancy and lactation.



**LORD'S**

**HOMOEOPATHY AT ITS BEST**

[lordshomoeopathic.com](http://lordshomoeopathic.com)

Information for the use only of a registered medical practitioner or a hospital or laboratory





Earache is very unsettling

## LORD'S MULLEIN OIL EAR DROPS

Effective solution for various ear problems including earache

### INDICATIONS

- Earache
- Dryness in ears
- Purulent discharge from ears

**COMPOSITION:** Mullein Ext. HPI, Glycerin HPI, Acidium Boracicum HPI, Excip. q.s. to 100%, Alcohol Content 18% v/v.

**DOSAGE:** Instill 3-4 drops into the ears 3-4 times a day, cover it with cotton or as prescribed by the physician.

**PRESENTATION:** 15ml. & 25ml.

**LORD'S**

**HOMOEOPATHY AT ITS BEST**

[lordshomeopathic.com](http://lordshomeopathic.com)

Information for the use only of a registered medical practitioner or a hospital or laboratory



MUL

# LORD'S MOTHER TINCTURES

At Lord's Every Step Of The Manufacturing Process – From The Harvesting Of Source Material To The Package That Leaves Our Units – Is Continually Monitored And Documented As Per Gmp Guidelines. The preparation of LORD'S MOTHER TINCTURES is a meticulous process which begins with

**Step1 :-** Compiling healthy herbs by subjecting them to physical, morphological and chemical testing through modern equipment like UV spectrophotometer, TLC & HPTLC



**Step 2:-** Acquiring EXTRA NEUTRAL ALCOHOL which is to be used for the preparation of Mother Tinctures and testing it for impurities through tests like Gas chromatography & Chemical methods.



**Step3:-** Next the DM (Demineralised) water produced by our inhouse DM Water plant is subjected to Conductivity Tests.

**LORD'S**

**HOMOEOPATHY AT ITS BEST**

[lordshomeopathic.com](http://lordshomeopathic.com)

Information for the use only of a registered medical practitioner or a hospital or laboratory



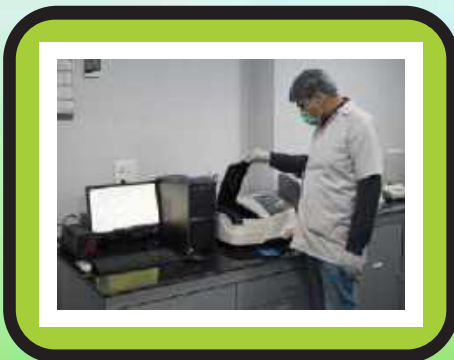


# LORD'S MOTHER TINCTURES



**Step 4:-** Thereafter ENA and DM water is used to percolate or macerate the herbs to prepare Mother Tinctures.

**Step 5:-** Next hydraulic presses are used to extract tincture from the herbs.



**Step 6:-** Once the Mother Tincture is ready it is subjected to rigorous testing in Quality Control department by using TLC and/or HPTLC to confirm the requisite quality.

**PRESENTATION:** LORD'S offers a range of about 300 mother tinctures in categories of A, B, C, D, E, F, G, H, I and Special Category (SC) in packs of 30ml., 100ml. and 450ml

**LORD'S**

**HOMOEOPATHY AT ITS BEST**

[lordshomeopathic.com](http://lordshomeopathic.com)

Information for the use only of a registered medical practitioner or a hospital or laboratory



**NHD**

Hair fall and brittle nails is a widespread issue

## **LORD'S NH AID TABLETS**

Rich source of nourishment for hair and nails

### **BENEFITS**

- ✓ **IMPROVED KERATIN STRUCTURE**
- ✓ **PROMOTES HEALTHY NAILS**
- ✓ **STIMULATE HAIR GROWTH**

**COMPOSITION:** Each film coated tablet contains L – Cysteine 20mg., Methionine 10mg. , Nettle leaf 20mg., Inositol 200mcg., Biotin or Vitamin B7 50 mcg.,(10%-RDA).

**DOSAGE:** 1 Tablet once daily or as prescribed by the dietician/ doctor.

**PRESENTATION:** 60 Tablets

**LORD'S**

**HOMOEOPATHY AT ITS BEST**

[lordshomeopathic.com](http://lordshomeopathic.com)



Information for the use only of a registered medical practitioner or a hospital or laboratory



# ONT1



## LORD'S OINTMENTS

Acid Chryso, Aesculus, Arnica, Calendula  
Cantharis, Echinacea, Graphites, Hamamelis, Ledum  
Petroleum, Rhus Tox, Skookum Chuck, Sulphur Thuja

### **ACID CHRYSO:**

**INDICATION:** Useful in skin diseases especially in ringworm, psoriasis, herpes, acne rosacea and vascular lesions associated with foul smelling discharge.

**Content :** Acid Chryso in white petroleum jelly, paraffin & lanolin base.

### **AESCULUS :**

**INDICATION:** Very effective in non-bleeding piles, fissures and cracks of Anus.

**Content:** Aesculus Hipp. 1x in white petroleum jelly, paraffin & lanolin base.

### **ARNICA :**

**INDICATION:** Useful in traumatic injuries, sprain, muscular pains, neuralgias and haematoma.

**Content :** Calendula 1x in white petroleum jelly, paraffin & lanolin base.

### **CALENDULA :**

**INDICATION:** Antiseptic cream for healing wounds, cuts, burns, bruises, chapped and rough hands.

**Content :** Calendula 1x in white petroleum jelly, paraffin & lanolin base.

### **CANTHARIS :**

**INDICATION:** Useful burning pains and as a dressing for psoriasis, ulcers etc.

**Content :** Cantharis 1x in white petroleum jelly, paraffin & lanolin base.

### **ECHINACEA :**

**INDICATION:** An effective antibacterial ointment for foul ulcers, gangrene, boils and insect bites.

**Content :** Echinacea 1x in white petroleum jelly, paraffin & lanolin base.

**PRESENTATION : 25g**



**LORD'S**

**HOMOEOPATHY AT ITS BEST**

[lordshomeopathic.com](http://lordshomeopathic.com)

Information for the use only of a registered medical practitioner or a hospital or laboratory

# ONT2



## LORD'S OINTMENTS

Acid Chryso, Aesculus, Arnica, Calendula  
Cantharis, Echinacea, Graphites, Hamamelis, Ledum  
Petroleum, Rhus Tox, Skookum Chuck, Sulphur, Thuja

### GRAPHITES:

**INDICATION:** Useful in exudative eruptions, persistent dryness of skin, eczema and dermatitis.

**Content :** Graphites in white petroleum jelly, paraffin & lanolin base.

### HAMAMELIS :

**INDICATION:** Very useful in bleeding piles and cracked heels.

**Content:** Hamamelis 1x in white petroleum jelly, paraffin & lanolin base.

### LEDUM :

**INDICATION:** Anti-dote for stings and bites of insects, rheumatic pains, especially of the joints.

**Content :** Ledum Pal 1x in white petroleum jelly, paraffin & lanolin base.

### PETROLEUM :

**INDICATION:** Useful for dry and cracked skin, dry eczema, bed sore and psoriasis of hands.

**Content :** Petroleum Ø in white petroleum jelly, paraffin & lanolin base.

### RHUS TOX :

**INDICATION:** Effective in stiffness of joints neck, rheumatism and sciatic.

**Content :** Rhus-Tox in white petroleum jelly, paraffin & lanolin base.

### SKOOKUM CHUCK :

**INDICATION:** Useful in skin diseases like psoriasis, eczema, dry and scabby skin.

**Content :** Skookum Chuck in white petroleum jelly, paraffin & lanolin base.

### SULPHUR:

**INDICATION:** An all purpose antibacterial Ointment

**Content :** Sulphur in white petroleum jelly, paraffin & lanolin base.

### THUJA :

**INDICATION:** Useful in warts and condylomata

**Content :** Thuja in white petroleum jelly, paraffin & lanolin base.

**PRESENTATION:** 25g .

**LORD'S**

**HOMOEOPATHY AT ITS BEST**

[lordshomeopathic.com](http://lordshomeopathic.com)

Information for the use only of a registered medical practitioner or a hospital or laboratory







# ORTH

Osteoporosis is excruciatingly painful

## LORD'S ORTHOKURE TABLETS

Reduces the progression of bone loss

### INDICATIONS

- Pain and swelling in joints
- Stiffness
- Arthritis & Rheumatism
- Osteoporosis

**COMPOSITION:** Each Film coated tablet contains:  
Glucosamine 500 mg., Curcumin 125 mg., Boswellia 75 mg.

**DOSAGE:** 1 Tablet twice a day. Or as prescribed by the dietician/physician.

**PRESENTATION:** 30 Tablets & 60 Tablets



**LORD'S**

**HOMOEOPATHY AT ITS BEST**

[lordshomeopathic.com](http://lordshomeopathic.com)

Information for the use only of a registered medical practitioner or a hospital or laboratory



# PHYT

## LORD'S PHYTOLACCA BERRY TABLETS

Safe & Natural way to combat obesity



### INDICATIONS

- Excess weight gain
- Fatigue due to overweight
- Post pregnancy weight gain

**COMPOSITION:** Phytolacca Berry in Lactose base.

**DOSAGE:** 4 Tablets one hour before meals, three times a day or as prescribed by the Physician.

**PRESENTATION:** 25 g. & 450 g.



**LORD'S**

**HOMOEOPATHY AT ITS BEST**

[lordshomoeopathic.com](http://lordshomoeopathic.com)

Information for the use only of a registered medical practitioner or a hospital or laboratory



# PROS



Enlarged prostate is common among middle aged men

## LORD'S PROSTOKARE TABLETS

Eliminates the silent suffering of men from BPH\*

### INDICATIONS

- Benign Prostatic Hyperplasia\*
- Prostatitis
- Prostatodynia

**COMPOSITION:** Chimaphila Umbellata 3x, Ferrum Picricum 3x, Hydrangea Arborescens 3x, Pareira Brava 6x, Sabal Serrulata 3x, Staphysagria 3x, Thuja Occidentalis 3x in equal proportion excipient q.s. to 550 mg

**DOSAGE:** 1-2 Tablets thrice a day or as directed by the physician.

**PRESENTATION:** 30 tablets in blister of 2x15 tablets.

**LORD'S**

**HOMOEOPATHY AT ITS BEST**

lordshomoeopathic.com

Information for the use only of a registered medical practitioner or a hospital or laboratory



RLXS



For unsettling headaches

## LORD'S RELAX-H TABLETS

Effectively relieves headache

### INDICATIONS

- Intense throbbing or a pulsating sensation in head
- Complaints of pain associated with stiffness of eyelids

**COMPOSITION:** Each Tablet contains: Iris Versicolor 3x, Cedron 3, Ignatia Amara 6x, Spigelia Anthelmia 6x, Usnea Barbata 3x, In equal proportion, Excipients q.s. to one tablet of 100 mg.

### DOSAGE:

**Adults:** 4 Tablets 3-4 times daily or 2-3 hourly during headache.

**Children:** Half of adult dose or as prescribed by the physician.

**PRESENTATION:** 25 g.



**LORD'S**

**HOMOEOPATHY AT ITS BEST**

[lordshomoeopathy.com](http://lordshomoeopathy.com)

Information for the use only of a registered medical practitioner or a hospital or laboratory





Musculoskeletal pain severely impacts the mobility

## LORD'S RHEUMA-KOLL

-SYRUP -TABLETS -GEL -PAIN RELIEF OIL

Brings back the mobility

### INDICATIONS

- Spondylitis
- Slipped Disc
- Rheumatic Arthritis
- Sprains and stiffness of muscles
- Other musculoskeletal Conditions



### COMPOSITION:

**SYRUP :** Acidum Formicum 3x, Colchicine 5x, Rhus Tox 3x, Natrum Salicylicum 3x, Ledum Pal 3x, Dulcamara 3x, Lithium Carb. 5x, Gelsemium Sem. 3x, Ulmus Fulva 5x, Deionised Water & Excip. q.s. to 5 ml., Alcohol contents 5.74% v/v

**TABLETS:** Ferrum Phos. 3x, Magnesium Phos. 3x, Kali Sulphuricum 3x, Natrum Sulphuricum 3x.

**GEL:** Arnica Montana 1x, Cantharis 1x, Gaultheria Produmbans 1x, In equal proportions total 1%, Methyl Salicylate, Gel Base q.s.

**OIL :** Rhus Tox-1x, Bryonia Alb-2x, Terebinthinae-1x, Camphor-1x, Menthol-1x, Thymol 1x, Symphytum off in sesame oil (non alcoholic).

**MODE OF USE: SYRUP:** One teaspoonful diluted with quarter cup of luke warm water twice a day or as directed by the physician.

**TABLETS: Adult:** One tablet three times a day.

**Children:** One tablet two times a day or as prescribed by the physician.

**GEL & RHEUMA-KOLL PAIN RELIEF OIL :** For external use only or as prescribed by the physician.

**Caution:** Do not apply on cracked skin.

**PRESENTATION:** Syrup: 115ml, 180ml & 450ml. Tablets and Gel - 25g. each, Oil - 60 ml.

**LORD'S**

**HOMOEOPATHY AT ITS BEST**

[lordshomoeopathic.com](http://lordshomoeopathic.com)





# LORD'S SARSAMED

A natural blood purifier

## INDICATIONS

- Pimples
- Acne
- Psoriasis
- Scabies
- Pustules
- Urticaria



**COMPOSITION:** Each 5ml. Contains:  
Azadirachta Indica Q - 0.05ml., Echinacea  
Angustifolia Q - 0.05ml., Gentiana Lutea Q -  
0.05ml., Phytolacca Decandra Q -  
0.05ml., Sarsaparilla Q - 0.05ml., Sulphur  
2X - 0.1315ml., Swertia Chirata Q 0.05ml.,  
Tinospora Cordifolia Q 0.05ml., Alcohol  
Content - 7.5% v/v

## DOSAGE:

**ADULTS:** One teaspoonful 2-3 times a  
day

**CHILDREN:** Half teaspoonful 1-2 times a  
day or as prescribed by the physician

**PRESENTATION:** 180ml and 450ml

**LORD'S**

**HOMOEOPATHY AT ITS BEST**

[lordshomeopathic.com](http://lordshomeopathic.com)







# LORD'S SKIN CARE PRODUCTS

*Beautiful Skin Begins With Exceptional Skincare*



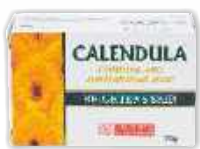
**ARNICA SOAP**

## ARNICA SOAP WITH ALOEVERA:

**Nourishes and smoothens skin**

Arnica soap with Aloe vera with its herbal formula ensures a deeply nourished, clean and bright skin with every wash. The medicinal properties of the herbs also aid in providing relief from itchiness ensuring germ free protection every day.

**PRESENTATION : 75 g**



**CALENDULA SOAP**

## CALENDULA SOAP:

**Soothing and Moisturizing Effect**

Calendula Soap with its anti bacterial properties along with other herbal ingredients like Wheat germ oil, Orange peel, Licorice, Rosemary, Jojoba Oil and Glycerine provides a soothing and moisturising effect.

**PRESENTATION : 75 g**



**GLOWSKIN SOAP**

## GLOWSKIN SOAP:

**Moisturizing Soap for dry skin**

Glow Skin Soap through its ingredients like Vitamin-E, Jojoba oil, Shea butter, Olive oil, Calendula and Aloe vera protects the skin from breakout causing free radicals and thoroughly moisturises and softens dry skin.

**PRESENTATION : 75 g**



**BERBERIS SOAP**

## BERBERIS SOAP:

**Anti Acne Cleanser**

Berberis soap along with Berberis is enriched with other herbal ingredients like Calendula, Rosemary, Aloe vera, Wheat germ oil & Tea Tree oil. The herbal blend of these ingredients effectively controls unwanted sebum and inhibits acne causing bacteria and hence provides an effective solution for acne & oily skin.

**PRESENTATION : 75 g**



**CLEAR-SKIN SOAP**

## CLEAR-SKIN SOAP

**Antiseptic Soap**

Clear Skin Soap has antiseptic properties through its herbal ingredients like Chamomile, Aloe vera, Tea Tree Oil, Calendula, Lemon Peel & Vitamin-E. Clear Skin Soap soothes skin rashes, minor burns and reduces skin inflammation

**PRESENTATION : 75 g**



**NEEM CLEAN SOAP:**

## NEEM CLEAN SOAP

**Triple Herb Nourishment with Neem, Aloe vera & Amla**

Neem Clean Soap provides the skin with triple herb nourishment with the three active herbal ingredients in it. Neem kills bacteria that causes acne and allergies, Amla which is rich in Vitamin-C controls free radical damage, Aloe vera with its anti inflammatory action relieves itchy skin conditions and moisturises the skin thus providing triple herb nourishment.

**PRESENTATION : 75 g**

**LORD'S**

**HOMOEOPATHY AT ITS BEST**

[lordshomeopathic.com](http://lordshomeopathic.com)

Information for the use only of a registered medical practitioner or a hospital or laboratory

# SKNA



*All weather natural care for multiple skin related issues*

## ALOVEE CREAM

**Enriched With Aloevera And Vitamin E**

**LORD'S ALOVEE FACE CREAM** is enriched with the goodness of Aloevera and Vitamin E which have antiseptic properties for tackling with multiple skin related issues.

The natural ingredients make **LORD'S ALOVEE FACE CREAM** suitable for all skin types in all seasons.

### BENEFITS

- ✓ **ANTI INFLAMMATORY**
- ✓ **ANTI AGEING**
- ✓ **TREATS ACNE**
- ✓ **HEALS WOUNDS**
- ✓ **TREATS DRY SKIN**

**DIRECTION:** Rub Lord's Alovee Face Cream gently on your face and skin with circular motion of your finger tips. For best results apply twice a day or as prescribed by the physician.

**PRESENTATION : 50g**



**LORD'S**

**HOMOEOPATHY AT ITS BEST**

[lordshomeopathic.com](http://lordshomeopathic.com)

Information for the use only of a registered medical practitioner or a hospital or laboratory





*A treat for the feet*

# LORD'S PEDICLEAN

*Deep Moisturizing Foot Cream*

**LORD'S PEDICLEAN FOOT CREAM** is enriched with natural ingredients like Cocoa Butter, Aloe Vera, Calendula and Glycerine which blend together for healing cracked heels and treating dry skin disorders.

## BENEFITS:

- ✓ SOFTENS DRY & ROUGH FEET
- ✓ MOISTURIZE & HEAL CRACKED HEELS
- ✓ GENTLY EXFOLIATES DEAD SKIN
- ✓ HEALS WOUNDS

**DIRECTION:** Rub Lord's Pediclean Foot Cream gently on your feet and skin with circular motion of your finger tips. For best results, apply twice a day or as prescribed by the physician.

**PRESENTATION : 50 g**



**LORD'S**

**HOMOEOPATHY AT ITS BEST**

[lordshomeopathic.com](http://lordshomeopathic.com)

Information for the use only of a registered medical practitioner or a hospital or laboratory



SKNP





SLP

# LORD'S SLEEPIN DROPS

## Relaxes Naturally

### INDICATIONS:

- Insomnia
- Restlessness
- Anxiety
- Fatigue due to overwork
- Nervous Exhaustion

**COMPOSITION:** Each 5 ml contains :  
Ammonium Brom. 3X 10% v/v, Avena  
Sativa Ø H.P.I. 10% v/v, Chamomilla 4X  
H.P.I. 10% v/v, Kali Phos. 2X H.P.I. 10% v/v,  
Humulus Lupulus 2X H.P.I. 10% v/v, Ignatia  
Amara 6X H.P.I. 10% v/v, Passiflora In. 2X  
H.P.I. 10% v/v, Valeriana Off. Ø 1 H.P.I. 10%  
v/v, Excipients Q.S., Alcohol Content 45%  
v/v

### DOSAGE:

**ADULTS:** 10-20 drops in some water, 3  
times a day, one hour before meals.

**Children:** Half the adult dosage or as  
prescribed by the physician.

**PRESENTATION:** 30 ml.

**LORD'S**

**HOMOEOPATHY AT ITS BEST**

[lordshomeopathic.com](http://lordshomeopathic.com)

Information for the use only of a registered medical practitioner or a hospital or laboratory







**SLIM**

# LORD'S SLIMEX SLIMMING DROPS

## Double action formula

### COMPOSITION:

**Slimex A:** 10 c.c., Fucus Ves 1x, Phytolacca Berry 2x, Calotropis G 4x,

**Slimex B:** 10 c.c., Pulsatilla Nig. 1x, Thyroidinum 6x, Graphite 6x, Alcohol 7% v/v.

### DOSAGE:

Mix 5 Drops of Slimex-A with 5 Drops of Slimex-B. Dilute with half tablespoon water. Take SLIMEX just before meals three times a day.

**PRESENTATION:** Twin Packs of Slimex - A & B (10 c.c. each)



**LORD'S**

**HOMOEOPATHY AT ITS BEST**

[lordshomeopathic.com](http://lordshomeopathic.com)

Information for the use only of a registered medical practitioner or a hospital or laboratory



# SPIR

## **LORD'S SPIRUVIT TABLETS**

*Power packed natural immunity booster*

*LORD'S SPIRUVIT is a power packed natural immunity boosting high nutritional value daily supplement. LORD'S SPIRUVIT helps improve and build immunity to fight diseases and revitalize the body and its functions along with providing many other benefits.*

### **BENEFITS:**

- ✓ Enhances the Immunological functions:  
Improper metabolism,
- ✓ Natural detoxifier
- ✓ Promotes good Liver Health
- ✓ Defends skin and body from free radical damage
- ✓ Helps maintain adequate levels of Vitamins and Minerals

**COMPOSITION:** Each LORD'S SPIRUVIT tablet contains Spirulina (500 mg.), Vitamin A (3200 IU – 100 % RDA), Vitamin B1 (1mg. – 71.42% RDA), Vitamin B2 (0.5mg. – 25% RDA), Vitamin B3 (10 mg. – 71.42% RDA), Vitamin B5 (5 mg. – 100% RDA), Vitamin B6 (1 mg. – 52.63%), B9 (1.5mg – 500% RDA), Vitamin B12 (1mcg. – 40% RDA), Vitamin D3 (400 IU – 66.66% RDA) and Vitamin E (20 IU – 200% RDA)

**DOSAGES:** 1 Tablet 3 times a day or as prescribed by the physician

**PRESENTATION:** 30 Tablets in *blister of 3x10 Tablets.*



**LORD'S**

**HOMOEOPATHY AT ITS BEST**

[lordshomeopathic.com](http://lordshomeopathic.com)

Information for the use only of a registered medical practitioner or a hospital or laboratory



# SPON



## LORD'S SPONDI-RITE DROPS

*Brings life back to normal*

### INDICATIONS:

- Radiating pain
- Neuralgia
- Stiffness
- Cramps

### COMPOSITION:

#### Each 10ml. contains :

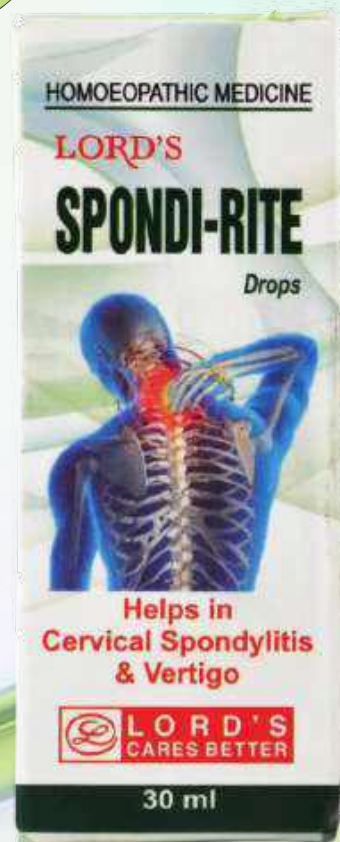
Colocynthis Vulgaris	3x	1.0 ml.
Ruta Graveolens	3x	1.0 ml.
Hypericum Perforatum	5x	1.0 ml.
Ledum Palustre	2x	2.0 ml.
Cuprum Metallicum	30	2.0 mg.
Dulcamara	30	2.0 ml.
Conium Maculatum	3x	1.0 ml.
Alcohol content		90 %
v/v		

### DOSAGE:

**Adults :** 10-15 drops in half cup of lukewarm water thrice a day. or as prescribed by the physician.

**Children:** Half the adult dosage or as prescribed by the physician.

**PRESENTATION: 30 ml.**



**LORD'S**

**HOMOEOPATHY AT ITS BEST**

[lordshomoeopathic.com](http://lordshomoeopathic.com)

Information for the use only of a registered medical practitioner or a hospital or laboratory

**STNG**

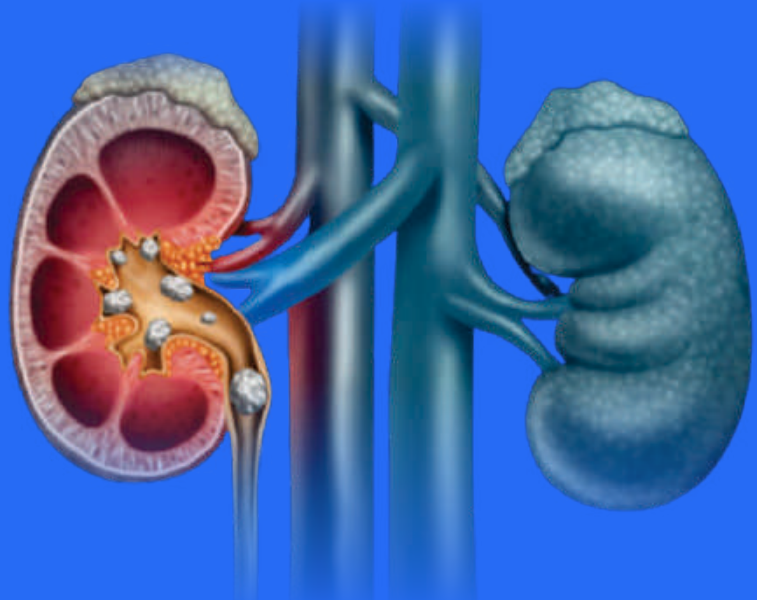


# LORD'S STONE GO DROPS

Potent stone expeller

## INDICATIONS:

- Renal Calculi
- Uterine Calculi
- Renal Colic



## COMPOSITION:

Berberis Vulgaris Ø, Sarsaparilla Ø,  
Ocimum Canum Ø, Solidago  
Virgaurea Ø, Pareira Brava Ø,  
Senecio Aureus Ø, Excipients q.s.,  
Alcohol Content 61% v/v

## DOSAGE:

10-15 Drops in some water 2-3  
times a day or as prescribed by the  
physician.

**PRESENTATION: 30 ml.**



**LORD'S**

**HOMOEOPATHY AT ITS BEST**

[lordshomoeopathic.com](http://lordshomoeopathic.com)

Information for the use only of a registered medical practitioner or a hospital or laboratory



# **LORD'S STONIL TABLETS**

Effectively relieves the symptoms of renal calculi

## **INDICATIONS:**

- Renal Calculi
- Renal Colic
- Urine hesitancy
- Burning sensation while urinating
- Frequent urination & inconsistency
- Blood or pus in the urine

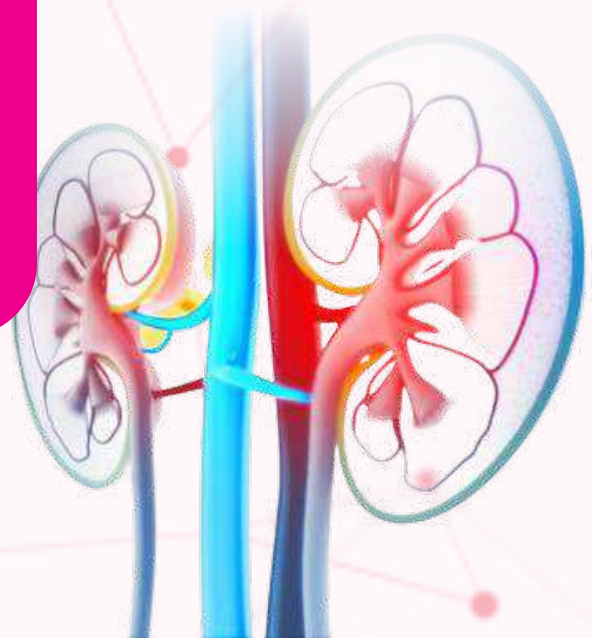
## **COMPOSITION:**

Cantharis 3x, Dioscorea Villosa 3x, Petroselinum Sativum 3x, Stigmata Maydis 1x, Thuja Occidentalis 6x, Uva Ursi 6x, Vesicaria Communis 6x, In Sugar of milk base (Lactose), in equal proportion excipient q.s. to 250 mg.

## **DOSAGE:**

1-2 Tablets thrice a day or as directed by the physician.

**PRESENTATION:** 40 Tablets in blister of 2 x 20 tablets.



**LORD'S**

**HOMOEOPATHY AT ITS BEST**

[lordshomoeopathic.com](http://lordshomoeopathic.com)

Information for the use only of a registered medical practitioner or a hospital or laboratory



TB

# TABLETS



- ***Pharma Grade Lactose Imported From Holland***



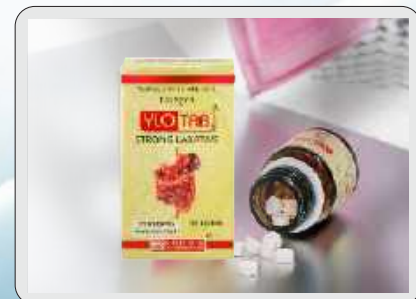
- ***Quick Disintegration Of Tablets***

- ***Automatic & Precise Production Processes***



- ***Dust Free, Temperature Controlled, Sanitized And Spacious Manufacturing & Warehousing***

- ***Uniform Dispersion Of Medicament Resulting In Highest Quality Of Tablets***



**LORD'S**

**HOMOEOPATHY AT ITS BEST**

[lordshomoeopathic.com](http://lordshomoeopathic.com)

Information for the use only of a registered medical practitioner or a hospital or laboratory



# Bio-Chemic

## TISSUE REMEDIES



### Name of Bio Chemic Salt      Chemical Formula

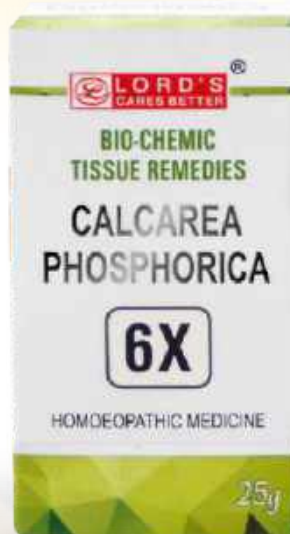
● Calcarea Fluorica	= $\text{CaF}_2$
● Calcarea Phosphorica	= $\text{Ca}_3(\text{PO}_4)_2$
● Calcarea Sulphurica	= $\text{CaSO}_4 \cdot 2\text{H}_2\text{O}$
● Ferrum Phosphoricum	= $\text{Fe}_3(\text{PO}_4)_2 \cdot 8\text{H}_2\text{O}$
● Kali Muriaticum	= $\text{KCl}$
● Kali Phosphoricum	= $\text{K}_2\text{HPO}_4$
● Kali Sulphuricum	= $\text{K}_2\text{SO}_4$
● Magnesium Phosphoricum	= $\text{MgHPO}_4 \cdot 7\text{H}_2\text{O}$
● Natrum Muriaticum	= $\text{NaCl}$
● Natrum Phosphoricum	= $\text{Na}_2\text{HPO}_4 \cdot 12\text{H}_2\text{O}$
● Natrum Sulphuricum	= $\text{Na}_2\text{SO}_4 \cdot 10\text{H}_2\text{O}$
● Silicea	= $\text{SiO}_2$

### Dosage

**Adults :** 4 Tablets 4 Times a day

**Children :** 2 Tablets 4 Times a day. Or as prescribed by the physician

**Presentation :** 25g & 450g



**LORD'S**

**HOMOEOPATHY AT ITS BEST**

lordshomeopathic.com

Information for the use only of a registered medical practitioner or a hospital or laboratory



# BIO-COMBINATONS

**1-28 Tablets**

- |                         |                                      |
|-------------------------|--------------------------------------|
| 1 Anaemia               | 17 Piles                             |
| 2 Asthma                | 18 Pyorrhoea                         |
| 3 Colic                 | 19 Rheumatism                        |
| 4 Constipation          | 20 Skin Disease                      |
| 5 Coryza                | 21 Teething Troubles In Children     |
| 6 Cough, Cold & Catarrh | 22 Scrofula (enlarged Glands)        |
| 7 Diabetes              | 23 Toothache                         |
| 8 Diarrhoea             | 24 Five-phos-tonic : Nerve and Brain |
| 9 Dysentery             | 25 Acidity, Flatulence, Indigestion  |
| 10 Enlarged Tonsils     | 26 Easy Parturition (easy Delivery)  |
| 11 Fever                | 27 Lack of Vitality                  |
| 12 Headache             | 28 Tonic                             |
| 13 Leucorrhoea          |                                      |
| 14 Measles              |                                      |
| 15 Menstrual Troubles   |                                      |
| 16 Nervous Exhaustion   |                                      |

**PRESEBTATION : 25 g and 450 g**



**LORD'S**

**HOMOEOPATHY AT ITS BEST**

[lordshomeopathic.com](http://lordshomeopathic.com)

Information for the use only of a registered medical practitioner or a hospital or laboratory



# TBHT



## HOMOEOPATHIC TABLETS

- |                            |                                |                              |
|----------------------------|--------------------------------|------------------------------|
| 1 Antimonium Crudum 3X     | 36 Hepar Sulph 3X              | 48 Ova Tosta 3X, 6X          |
| 2 Antimonium Muriaticum 3X | 37 Insulin 6X                  | 49 Pancreatinum 3X           |
| 3 Antimonium Tart 3X       | 38 Kali Bromatum 3X            | 50 Pepsinum 3X               |
| 4 Argentum Iodatum 3X      | 39 Kali Iodatum 3X             | 51 Pituitary Posterior 3X    |
| 5 Aegentum met 3X          | 40 Lecithin 3X                 | 52 Plumbum Iodatum           |
| 6 Ars. Sulph. Flav 4X, 6X  | 41 Macrocinum 3X               | 53 Plumbum Metallicum 3X     |
| 7 Arsenic Iod 4X, 6X       | 42 Magnesia Carbonica 3X       | 54 Sanguinarinum Nitricum 3X |
| 8 Aurum met 3X             | 43 Mercurius Dulcis 3X         | 55 Sanguinarinum Nitricum 3X |
| 9 Aurum Mur. Nat. 3X       | 44 Mercurius Iodatus Flavus 3X | 56 Santonine 3X              |
| 10 Baeyta Card. 3X         | 45 Mercurium Iodatus Ruber 3X  | 57 Skookum 3X                |
| 11 Baryta Iodata 3X        | 46 Mercurius Solubilis 3X      | 58 Strychninum Phos 3X, 6X   |
| 12 Baryta Mur 3X, 6X       | 47 Oleum Jac 3X                | 59 Tellurium 3X              |
| 13 Borax 3X                | 48 Ova Tosta 3X, 6X            | 60 Thisinaminum 3X           |
| 14 Calcarea Ars 3X         | 49 Pancreatinum 3X             | 61 Thyroidinum 3X, 6X        |
| 15 Calcarea Arsenicosa 3X  | 50 Pepsinum 3X                 | 62 Titanium 3X               |
| 16 Calcarea Carb 3X        | 51 Pituitary Posterior 3X      | 63 Uranium Nit 3X, 6X        |
| 17 Calcarea Hypophos 3X    | 52 Plumbum Iodatum             | 64 Yohimbinum 3X             |
| 18 Calcarea Iod 3X         | 53 Plumbum Metallicum 3X       | 65 Zincum Metallicum 3X      |
| 19 Calcarea Oxalica        | 54 Sanguinarinum Nitricum 3X   |                              |
| 20 Calcarea Renalis 3X     | 55 Sanguinarinum Nitricum 3X   |                              |
| 21 Carbo Veg. 3X, 6X       | 56 Santonine 3X                |                              |
| 22 China 3X                | 57 Skookum 3X                  |                              |
| 23 Chininum Arsenicosum 3X | 58 Strychninum Phos 3X, 6X     |                              |
| 24 Chininu, Solph 3X       | 59 Tellurium 3X                |                              |
| 25 Cholesterinum 3X        | 60 Thisinaminum 3X             |                              |
| 26 Cinnabaris 3X           | 61 Thyroidinum 3X, 6X          |                              |
| 27 Cuprum Oxy Nig. 3X      | 62 Titanium 3X                 |                              |
| 28 Fel. Tauri. 3X          | 63 Uranium Nit 3X, 6X          |                              |
| 29 Ferrum Arsenicicum 3X   | 64 Yohimbinum 3X               |                              |
| 30 Ferrum Iodatum 3X       | 65 Zincum Metallicum 3X        |                              |
| 31 Ferrum met 3X           | 43 Mercurius Dulcis 3X         |                              |
| 32 Ferrum Picrate 3X       | 44 Mercurius Iodatus Flavus 3X |                              |
| 33 Graphites 3X            | 45 Mercurium Iodatus Ruber 3X  |                              |
| 34 Gun Powder 3X, 6X       | 46 Mercurius Solubilis 3X      |                              |
| 35 Hekla Lave 3X           | 47 Oleum Jac 3X                |                              |

**PRESEBTATION : 25 g and 450 g**

**LORD'S**

**HOMOEOPATHY AT ITS BEST**

lordshomeopathic.com

Information for the use only of a registered medical practitioner or a hospital or laboratory



# THK



Sore throat is irritating and unsettling

## LORD'S THROAT KURE TABLETS

Excellent relief from sore throat

### INDICATIONS:

- Hoarseness of voice
- Laryngitis & pharyngitis
- Sore throat
- Tonsillitis

### COMPOSITION:

**Each tablet contains equal proportion of :**  
Mercurius Iod. Ruber 6x, Belladonna 6x, Kali Muriaticum 6x, Baryta Carbonica 12x, Ferrum Phosphoricum 6x, Senega 6x, Ammonium Muriaticum Excipients q.s. to 250mg.

### DOSAGE:

**Adults :** 2 tablets 4 times a day.

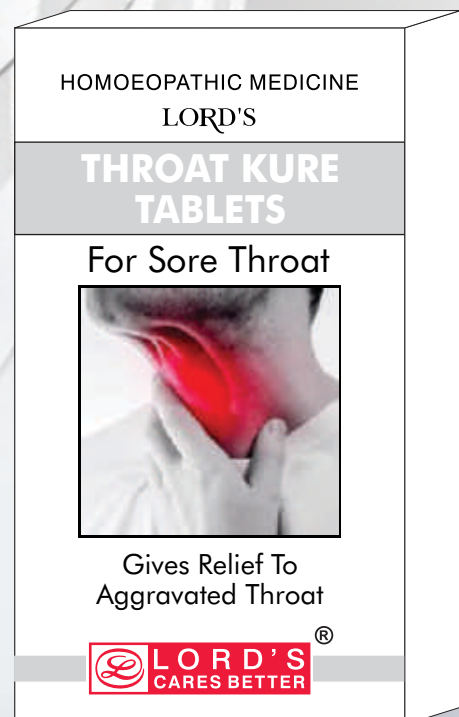
**Children :** 1 tablet twice a day or as prescribed by the physician.

**PRESENTATION: 25 g**

**LORD'S**

**HOMOEOPATHY AT ITS BEST**

[lordshomoeopathic.com](http://lordshomoeopathic.com)



Information for the use only of a registered medical practitioner or a hospital or laboratory



# LORD'S TONE UP 5000 DROPS

Powerful stimulant for men

## BENEFICIAL IN:

- VITALITY
- LOST VIGOUR
- IMPOTENCY
- MOOD ELEVATOR



## TREATMENT COURSE

Total quantity required is 180ML (6 Bottles) for men between the age group of 20 to 50 years.

Total quantity required is 210 ML (7 Bottles) for men between the age group of 51 to 70 years.

## COMPOSITION

Damiana 1x, Avena Sativa 2x, Agnus Castus 2x, Cinchona Officinalis 2x, Acidum Phosphoricum 3x, Viburnum Opulus 3x, Lycopodium Clavatum 4x, Yohimbinum 1x.

## DOSAGE:

20-30 drops diluted with quarter cup of water taken twice or thrice daily after meals or as directed by the physician.

PRESENTATION: 30 ML



**LORD'S**

**HOMOEOPATHY AT ITS BEST**

[lordshomoeopathic.com](http://lordshomoeopathic.com)

Information for the use only of a registered medical practitioner or a hospital or laboratory



TUS

# LORD'S TONE UP SYRUP

*Powerful rejuvenator*

## INDICATIONS:

- General Debility
- Nervous Depression
- Sexual Neurasthenia

## COMPOSITION:-

Damiana 1x, Avena Sativa 2x, Agnus Cast 2x, China Officinalis 2x, Acidum Phos. 3x, Viburnum Opulus 3x, Lycopodium Clavatum 4x, Yohimbinum 1x, Alcohol 11%v/v.

## DOSAGE:

**ADULTS ONLY:** One teaspoonful twice daily preferably after principal meals or as prescribed by the physician.

**PRESENTATION:** 180 ML & 450 ML



**LORD'S**

**HOMOEOPATHY AT ITS BEST**

[lordshomeopathie.com](http://lordshomeopathie.com)

Information for the use only of a registered medical practitioner or a hospital or laboratory





TONS

Enlarged tonsils are painful

## LORD'S TONSIRITE TABLETS

Effectively reduces inflammation in enlarged tonsils



### INDICATIONS:

- Inflamed, Enlarged & Painful tonsils
- Ulcerated sore throat

### COMPOSITION:-

Each tablet contains equal proportion of :  
Mercurius binlodatus 6x, Belladonna 6x,  
Kali Muriaticum 6x, Baryta Carbonica 12x,  
Ferrum Phosphoricum 6x, Excipient q.s. to  
1 tablet of 250 mg.

### DOSAGE:

**Adults:** 2 tablets thrice a day

**Children:** (Below 8 years): 1 tablet every 3  
hours or as prescribed by the physician.

**PRESENTATION: 25 G**



**LORD'S**

**HOMOEOPATHY AT ITS BEST**

[lordshomoeopathic.com](http://lordshomoeopathic.com)

Information for the use only of a registered medical practitioner or a hospital or laboratory

TOX



# LORD'S TOXKURE DROPS

*Reduces cravings for alcohol and tobacco*

## INDICATIONS:

- ALCOHOL, TOBACCO AND NICOTINE ADDICTION



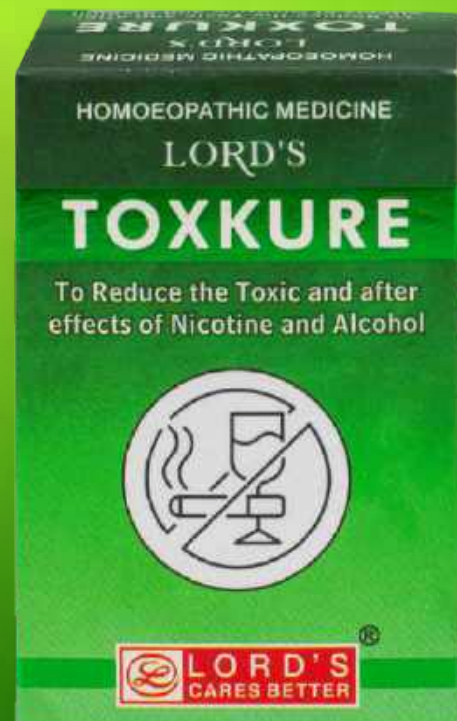
## COMPOSITION:-

Strychninum Nit 3D, Avena Sat. Ø, Quercus Glandium, Spiritus 2D, Kalmegh Ø, Caladium Seg. 3D, Daphne Indica 2D, Excipients q.s., Alcohol 46.6% v/v.

## DOSAGE:

15-20 drops diluted with half tablespoon of water taken twice daily. In acute cases to be taken four times daily or as prescribed by the physician.

PRESENTATION: 30 ml.



**LORD'S**

**HOMOEOPATHY AT ITS BEST**

[lordshomeopathic.com](http://lordshomeopathic.com)

Information for the use only of a registered medical practitioner or a hospital or laboratory



TRQL



Missing good night sleep due to hectic lifestyle?

## LORD'S TRAQUILITE TABLETS

Promotes natural sleep

### INDICATIONS:

- ANXIETY
- DEPRESSION
- INSOMNIA
- TENSION
- OVERWORK

### COMPOSITION:-

**Each Tablet contains equal proportion of :**  
Abrus Precatorius 6x, Aconitum Napellus 6x, Calendula Officinalis 3x, Viburnum Opulus 3x, Kali Phosphoricum 3x, Zincum Picricum 3x, In equal proportion, Excipients q.s. to 1 Tablet of 100 mg.

### DOSAGE:

**Adults :** 2-4 Tablets 4-6 times daily.

**Children :** Half of adult dosage or as prescribed by the physician.

**PRESENTATION: 25 g.**



LORD'S

**HOMOEOPATHY AT ITS BEST**

[lordshomeopathic.com](http://lordshomeopathic.com)

Information for the use only of a registered medical practitioner or a hospital or laboratory



TUM

# LORD'S TUMOUREX DROPS

*Checks the growth of glandular swellings & cysts*

## INDICATIONS:

- SWOLLEN GLANDS AND CYSTS
- HYPERPLASIA

## COMPOSITION:-

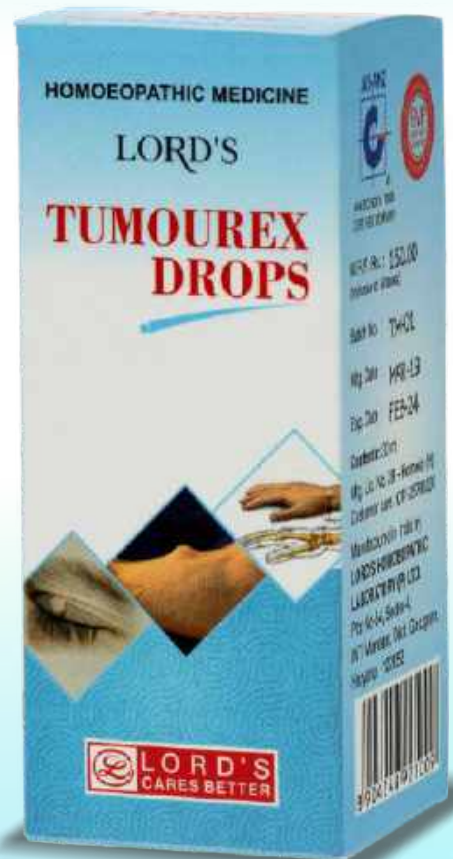
Conium Maculatum. 4x, Arsenicum Iodatum 30, Carbo Animalis 6, Clemetis Erecta 3x, Galium Aparine 30, Hydrastis Canadensis 2x, Phytolacca Decandra 3x, Alcohol Content 60% V/V.

## DOSAGE:

**Adults:** 10-15 drops in some water 3 times a day or as prescribed by the physician.

**Children:** Half of the adult dose or as prescribed by the Physician.

**PRESENTATION:** 30 ml .



**LORD'S**

**HOMOEOPATHY AT ITS BEST**

[lordshomoeopathic.com](http://lordshomoeopathic.com)

Information for the use only of a registered medical practitioner or a hospital or laboratory





URIC

*Increased uric acid in blood leads to painful gout*

## LORD'S URICID DROPS

*Reduces uric acid levels in blood naturally*

### INDICATIONS:

- INCREASED URIC ACID LEVELS
- GOUT

### COMPOSITION:-

**Each 1 ml.contains :** Berberis Vulgaris H.P.I. 3X 0.25 ml., Lycopodium Clav. H.P.I. 3X 0.25 ml., Urtica Urens H.P.I. 0.25 ml., Taraxacum H.P.I. 3X 0.25ml.

### DOSAGE:

10 drops in water, 3 times a day, 1 hour before or after meals or as prescribed by the physician.

**PRESENTATION: 30 ml.**



LORD'S

**HOMOEOPATHY AT ITS BEST**

[lordshomeopathic.com](http://lordshomeopathic.com)

Information for the use only of a registered medical practitioner or a hospital or laboratory



**VIGM**

# LORD'S VIGOR-M TABLETS

**An ultimate pleasure solution for men**

## INDICATIONS:

- Loss of vigor
- Sexual neurasthenia, Nervous exhaustion
- Premature or Delayed ejaculation.

## COMPOSITION:-

Damiana 3x- 0.03 ml, Acidum Phosphoricum 2x- 0.13 ml, Ginseng Panax Ø - 0.02 ml, Selenium 3x- 0.02 mg, Yonimbinum Ø - 0.02 ml insuger of milk dose Excipients q.s. to 550 mg.

## DOSAGE:

1-2 tablets twice a day or as directed by the physician.

**PRESENTATION: 30 Tablets in blister of 2x15 Tablets**



**LORD'S**

**HOMOEOPATHY AT ITS BEST**

[lordshomoeopathic.com](http://lordshomoeopathic.com)

Information for the use only of a registered medical practitioner or a hospital or laboratory



# VITC



## LORD'S VITAMIN C 500 WITH ZINC CHEWABLE TABLETS

*For Double Immune Support*

### BENIFITS:

- ✓ Encourages WBC production
- ✓ Reduces Oxidative stress
- ✓ Strengthens immune support
- ✓ Anti Inflammatory support
- ✓ Easy to consume chewable tablets



### COMPOSITION:

Each serving per tablet contains (approx)  
Vitamin C (as Ascorbic Acid) 500mg –  
1250% of RDA Zinc Sulphate Elemental Zinc  
11mg – 100% of RDA

**DOSAGE:** As prescribed by the physician

**PRESENTATION:** 30 tablets in blister of  
3x10 Tablets



**LORD'S**

**HOMOEOPATHY AT ITS BEST**

[lordshomeopathic.com](http://lordshomeopathic.com)

Information for the use only of a registered medical practitioner or a hospital or laboratory



# LORD'S VITAMIN D ALFA + TABLETS

Your daily dose of vitamins & minerals

## BENEFITS:

- ✓ Restores bone health
- ✓ Antioxidant support
- ✓ Maintains healthy teeth
- ✓ Supplement vitamin and mineral deficiencies

## COMPOSITION:

Each Film coated tablet contains: Alfalfa 5 mg, Anise seed 5 mg , Calcium citrate 22.75mg - 3.79%, Vitamin C18.5mg - 3.49%, Light Magnesium oxide 11.85mg - 3.49%, Rosemary officinalis - 5 mg , Iron (ferrous ascorbate) 8mg - 47.06%, Aloe barbadensis - 7.5mg , Vitamin B6 - 1.4mg 70%, Vitamin B3 - 6.5mg - 36.11%, Vitamin E 6mg - 60%, Fenugreek 5mg Glutamic acid 5. 25 mg, L-Lysine 5 mg., Zinc monomethionine 4mg - 33.33%, Vitamin B1 - 0.5mg - 35.71%, Vitamin B2 - 0.5mg - 31.25%, Vitamin B5 - 0.7mg - 0.11%, Vitamin B9 - 64mcg - 32%, Vitamin B12 - 0.2mcg - 20%, Vitamin D3 - 15mcg - 100%, Vitamin A - 320mcg - 53.33%, Chromium Picolinate - 100 msg - 50%, Potassium iodide 100mcg - 66.67%, Cupric oxide 150mcg. - 7.5%, Sodium bicarbonate - 100mcg - 0.004%, Manganese Chloride 225mcg - 4.50%, Sodium molybdate 16mcg - 21.33%, Selenite 16mcg - 40%.

**DOSAGE:** 1 tablet once daily or as prescribed by the dieticia.

**PRESENTATION:** 30 and 60 tablets.

**LORD'S**

**HOMOEOPATHY AT ITS BEST**

[lordshomeopathic.com](http://lordshomeopathic.com)





VITE



## LORD'S VITAMIN E GLOW TABLETS

*Promotes healthy & younger looking skin*

### BENEFITS

- ✓ Reduces fine lines and dark spots
- ✓ Protects skin from frequent breakouts
- ✓ Suitable for all skin types
- ✓ Safe, with no side effects.



### COMPOSITION:

Vitamin E 400 I.U, Selenium 100 mcg,  
Aloevera 60 mg

**DOSAGE:** 1 tablet once daily, or as  
prescribed by the dietician/Physician

**PRESENTATION:** 30 Tablets in blister  
of 3x10 Tablets



**LORD'S**

**HOMOEOPATHY AT ITS BEST**

[lordshomoeopathic.com](http://lordshomoeopathic.com)

Information for the use only of a registered medical practitioner or a hospital or laboratory



YLO

# LORD'S YLO TABLETS

*Strong Laxative*

## INDICATIONS:

- Constipation
- Infrequent stools
- Sense of incomplete emptying after a bowel movement
- Anal Itching

## COMPOSITION:

Each 330mg. tablet contains: Phenolphthalein 1x, Senna 1x, Sulphur 1x Excipients q.s.

## DOSAGE:

**Adults:** 2-4 Tablets at bed time.

**Children:** 1-2 Tablets at bed time or as prescribed by the physician.

**PRESENTATION:** 30 Tablets, 50 Tablets and 1000 Tablets



**LORD'S**

**HOMOEOPATHY AT ITS BEST**

[lordshomoeopathic.com](http://lordshomoeopathic.com)

Information for the use only of a registered medical practitioner or a hospital or laboratory





*Find More About Us*



**Quality, Reliability, Purity**



**LORD'S HOMOEOPATHIC LABORATORY (P) LTD.**

**C-106/5, Naraina Industrial Area Phase-I, New Delhi-110028**

**Unit-2 : Building No. 54, Sector-4, IMT Manesar, Haryana-122052**

**Phones : 011-43124040, 43124042 - 69**

**E-mail : lords\_homeo@yahoo.com**

**Website : www.lordshomoeopathic.com**